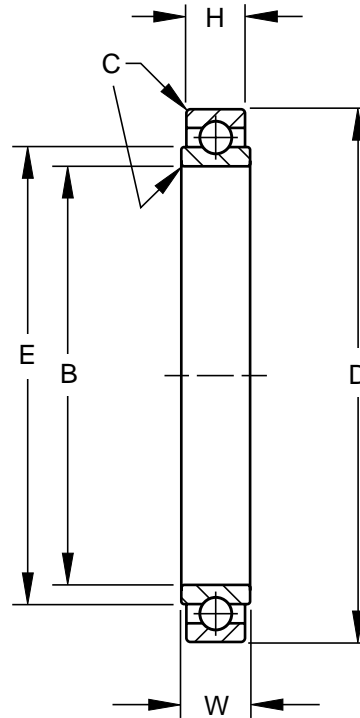


**MB500 Precision Series**

- Extra light duty
- Single row, ball
- This series is made of bearing quality chromium alloy, high carbon steel, and is not cadmium plated
- Open type – no seals or shields (unsealed version of MB500DD)
- Package/shipped with preservative oil
- Also offered with CRES 440C material per OEM specification



AIRFRAME CONTROL BALL BEARINGS

**SPECIFICATIONS AND ORDERING INFORMATION**

**TO ORDER, SPECIFY BEARING NUMBER AND FACTORY SPECIFICATION. SEE TABLE 1 ON PG 8. (Example MB538 FS464)**

Bearing Number 52100*	Bore B		Outside Diameter D		Widths				E	C	Wt.		Radial Limit Load Rating	Thrust Limit Load Rating				
	+0.0000, -0.0005, +0.000, -0.013		+0.0000, -0.0005, +0.000, -0.013		+0.0000, -0.0025, +0.000, -0.064	+0.000, -0.005, +0.00, -0.13					Approx.	+0.015, -0.000, +0.38, -0.00			Approx.			
	in.	mm	in.	mm	in.	mm	in.	mm	in.	mm	in.	mm	lbs.	kg	lbf.	N	lbf.	N
MB538	0.6250	15.875	1.0625	26.988	0.2810	7.140	0.250	6.35	0.781	19.84	0.015	0.38	0.02	0.009	3280	14600	1500	6700
MB539	0.7500	19.050	1.1875	30.163	0.2810	7.140	0.250	6.35	0.898	22.81	0.015	0.38	0.03	0.014	3750	16700	1700	7600
MB540	0.8750	22.225	1.3125	33.338	0.2810	7.140	0.250	6.35	1.019	25.88	0.015	0.38	0.04	0.018	4220	18800	1900	8500
MB541	1.0625	26.988	1.5000	38.100	0.2810	7.140	0.250	6.35	1.219	30.96	0.015	0.38	0.05	0.023	5000	22300	2200	9800
MB542	1.3125	33.338	1.7500	44.450	0.2810	7.140	0.250	6.35	1.454	36.93	0.015	0.38	0.07	0.032	5950	26500	2700	12000
MB543	1.5625	39.688	2.0000	50.800	0.2810	7.140	0.250	6.35	1.706	43.33	0.015	0.38	0.08	0.036	6880	30600	3200	14300
MB544	1.8125 <sup>(1)</sup>	46.038 <sup>(1)</sup>	2.2500 <sup>(2)</sup>	57.150 <sup>(2)</sup>	0.2810	7.140	0.250	6.35	1.974	50.14	0.015	0.38	0.09	0.041	7980	35500	3600	16000
MB545	2.0625 <sup>(1)</sup>	52.388 <sup>(1)</sup>	2.6250 <sup>(2)</sup>	66.675 <sup>(2)</sup>	0.2810	7.140	0.250	6.35	2.291	58.19	0.015	0.38	0.13	0.059	9220	41000	4000	17800
*MB546	2.3125 <sup>(1)</sup>	58.738 <sup>(1)</sup>	2.8750 <sup>(2)</sup>	73.025 <sup>(2)</sup>	0.2810	7.140	0.250	6.35	2.531	64.29	0.015	0.38	0.15	0.068	10150	45200	4400	19600

<sup>(1)</sup> +.0000 in. (+.000mm), -.0008 in. (-.020mm).

<sup>(2)</sup> +.0000 in. (+.000mm), -.0007 in. (-.018mm).

\* Check for availability.

† For CRES 440C material prefix "A" in part number; e.g., AMB538