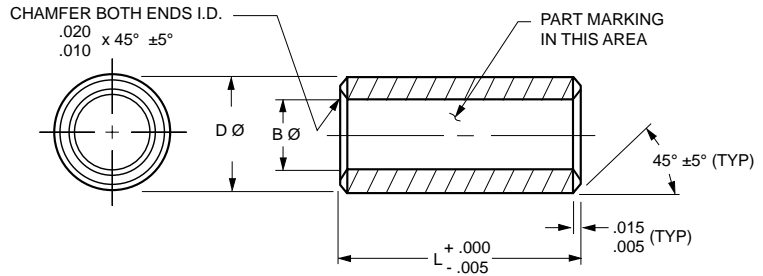


**MS14237 UNLINED STRAIGHT BUSHINGS**

- Material options: CRES, alloy steel, aluminum bronze, beryllium copper
- Finish options: Cadmium plating, zinc nickel plating, IVD aluminum coating
- A final size (FS) option is available. Parts are manufactured to customer's required dimensions



**SPECIFICATIONS AND ORDERING INFORMATION**

**DIMENSIONS – TOLERANCES**

Part Number	B		D		Weight		Interference Fit (Ref.)
	+.007, -.000 +.180, -.000		+.000, -.0005 +.000, -.013		Approx. (Assume 1 in. Length)		
	in.	mm	in.	mm	lbs.	kg	
MS14237C03-xxx	0.1770	4.496	0.3142	7.981	0.0149	0.0068	.0004/.0017 in. .003/.028 mm
MS14237C04-xxx	*0.2350	5.969	0.3767	9.568	0.0192	0.0087	.0004/.0017 in. .003/.028 mm
MS14237C05-xxx	*0.2990	7.595	0.4393	11.158	0.0229	0.0104	.0005/.0018 in. .013/.046 mm
MS14237C06-xxx	*0.3560	9.042	*0.5020	12.751	0.0277	0.0126	.0005/.0020 in. .013/.051 mm
MS14237C07-xxx	0.4210	10.693	*0.5646	14.341	0.0313	0.0142	.0005/.0021 in. .013/.053 mm
MS14237C08-xxx	0.4830	12.268	**0.6272	15.931	0.0354	0.0161	.0005/.0022 in. .013/.056 mm
MS14237C10-xxx	0.6080	15.443	***0.8150	20.701	0.0655	0.0297	.0006/.0025 in. .015/.064 mm
MS14237C12-xxx	**0.7320	18.593	***0.9400	23.876	0.0773	0.0351	.0006/.0025 in. .015/.064 mm
MS14237C14-xxx	**0.8570	21.768	***1.0651	27.054	0.0889	0.0403	.0006/.0026 in. .015/.066 mm
MS14237C16-xxx	**0.9820	24.943	***1.1901	30.229	0.1005	0.0456	.0006/.0026 in. .015/.066 mm
MS14237C18-xxx	**1.1070	28.118	***1.3151	33.404	0.1120	0.0508	.0006/.0026 in. .015/.066 mm
MS14237C20-xxx	**1.2320	31.293	***1.4401	36.579	0.1236	0.0561	.0006/.0026 in. .015/.066 mm
	*+.008, -.000 +.200, -.000		*+.000, -.0007 +.000, -.020 **+.000, -.0008 +.000, -.025 ***+.000, -.0010 +.000, -.025				

Available journal material options:  
 C=CRES 17-4PH per AMS 5643 (shown above)  
 S=Steel alloy 4130 per Mil-S-6758  
 A=Aluminum nickel bronze per AMS 4640  
 B=Beryllium copper per QQ-C-530  
 xxx: Length in .010 increments (ex: -025 = .025 in.)

JOURNAL BEARINGS