



# RBC Spherical Plain Bearings

## Interchange Tables

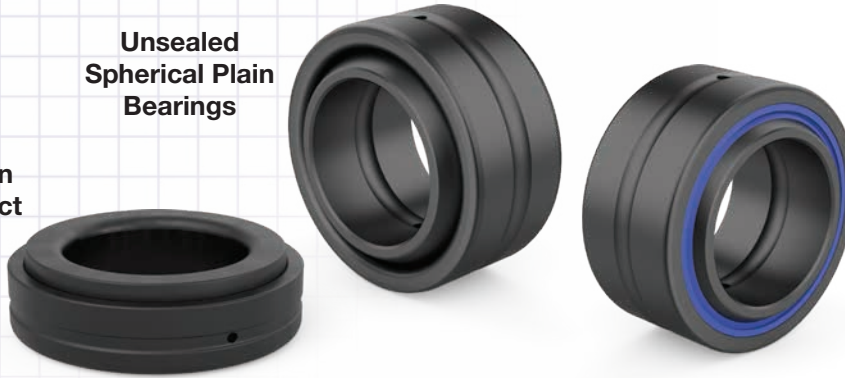


*Smoother. Faster. Longer. Because That's How We Roll.*

# Spherical Plain Bearings Interchange

Spherical Plain Angular Contact Bearings

Unsealed Spherical Plain Bearings



Sealed Spherical Plain Bearings

SKF	RBC
GAC25SA	<b>MB24SA</b>
GAC30SA	<b>MB30SA</b>
GAC35SA	<b>MB35SA</b>
GAC40SA	<b>MB40SA</b>
GAC45SA	<b>MB45SA</b>
GAC50SA	<b>MB50SA</b>
GAC60SA	<b>MB60SA</b>
GAC70SA	<b>MB70SA</b>
GAC80SA	<b>MB80SA</b>
GAC90SA	<b>MB90SA</b>
GAC100SA	<b>MB100SA</b>
GAC110SA	<b>MB110SA</b>
GAC120SA	<b>MB120SA</b>
GAZ008SA	<b>B8SA</b>
GAZ008SAIR	<b>IRB8SA</b>
GAZ008SAOR	<b>ORB8SA</b>
GAZ010SA	<b>B10SA</b>
GAZ010SAIR	<b>IRB10SA</b>
GAZ010SAOR	<b>ORB10SA</b>
GAZ012SA	<b>B12SA</b>
GAZ012SAIR	<b>IRB12SA</b>
GAZ012SAOR	<b>ORB12SA</b>
GAZ100SA	<b>B16SA</b>
GAZ100SAIR	<b>IRB16SA</b>
GAZ100SAOR	<b>ORB16SA</b>
GAZ104SA	<b>B20SA</b>
GAZ104SAIR	<b>IRB20SA</b>
GAZ104SAOR	<b>ORB20SA</b>
GAZ106SA	<b>B22SA</b>
GAZ106SAIR	<b>IRB22SA</b>
GAZ106SAOR	<b>ORB22SA</b>
GAZ108SA	<b>B24SA</b>
GAZ108SAIR	<b>IRB24SA</b>
GAZ108SAOR	<b>ORB24SA</b>
GAZ112SA	<b>B28SA</b>
GAZ112SAIR	<b>IRB28SA</b>
GAZ112SAOR	<b>ORB28SA</b>
GAZ200SA	<b>B32SA</b>
GAZ200SAIR	<b>IRB32SA</b>
GAZ200SAOR	<b>ORB32SA</b>
GAZ204SA	<b>B36SA</b>
GAZ204SAIR	<b>IRB36SA</b>
GAZ204SAOR	<b>ORB36SA</b>
GAZ208SA	<b>B40SA</b>
GAZ208SAIR	<b>IRB40SA</b>
GAZ208SAOR	<b>ORB40SA</b>

SKF	RBC
GAZ212SA	<b>B44SA</b>
GAZ212SAIR	<b>IRB44SA</b>
GAZ212SAOR	<b>ORB44SA</b>
GAZ300SA	<b>B48SA</b>
GAZ300SAIR	<b>IRB48SA</b>
GAZ300SAOR	<b>ORB48SA</b>
GAZ304SA	<b>B52SA</b>
GAZ304SAIR	<b>IRB52SA</b>
GAZ304SAOR	<b>ORB52SA</b>
GAZ308SA	<b>B56SA</b>
GAZ308SAIR	<b>IRB56SA</b>
GAZ308SAOR	<b>ORB56SA</b>
GAZ312SA	<b>B60SA</b>
GAZ312SAIR	<b>IRB60SA</b>
GAZ312SAOR	<b>ORB60SA</b>
GAZ400SA	<b>B64SA</b>
GAZ400SAIR	<b>IRB64SA</b>
GAZ400SAOR	<b>ORB64SA</b>
GAZ408SA	<b>B72SA</b>
GAZ408SAIR	<b>IRB72SA</b>
GAZ408SAOR	<b>ORB72SA</b>
GAZ500SA	<b>B80SA</b>
GAZ500SAIR	<b>IRB80SA</b>
GAZ500SAOR	<b>ORB80SA</b>
GAZ600SA	<b>B96SA</b>
GAZ600SAIR	<b>IRB96SA</b>
GAZ600SAOR	<b>ORB96SA</b>
GE12ES	<b>MB12</b>
GE15ES	<b>MB15</b>
GE17ES	<b>MB17</b>
GE17ES-2RS	<b>MB17SS</b>
GE20ES	<b>MB20</b>
GE20ES-2RS	<b>MB20SS</b>
GE25ES	<b>MB25</b>
GE25ES-2RS	<b>MB25SS</b>
GE30ES	<b>MB30</b>
GE30ES-2RS	<b>MB30SS</b>
GE35ES	<b>MB35</b>
GE35ES-2RS	<b>MB35SS</b>
GE40ES	<b>MB40</b>
GE40ES-2RS	<b>MB40SS</b>
GE45ES	<b>MB45</b>
GE45ES-2RS	<b>MB45SS</b>
GE50ES	<b>MB50</b>
GE50ES-2RS	<b>MB50SS</b>
GE60ES	<b>MB60</b>

SKF	RBC
GE60ES-2RS	<b>MB60SS</b>
GE70ES	<b>MB70</b>
GE70ES-2RS	<b>MB70SS</b>
GE80ES	<b>MB80</b>
GE80ES-2RS	<b>MB80SS</b>
GE90ES	<b>MB90</b>
GE90ES-2RS	<b>MB90SS</b>
GE100ES	<b>MB100</b>
GE100ES-2RS	<b>MB100SS</b>
GE110ES	<b>MB110</b>
GE110ES-2RS	<b>MB110SS</b>
GE120ES	<b>MB120</b>
GE120ES-2RS	<b>MB120SS</b>
GE140ES	<b>MB140</b>
GE140ES-2RS	<b>MB140SS</b>
GE160ES	<b>MB160-9L</b>
GE160ES-2RS	<b>MB160-9LSS</b>
GE180ES	<b>MB180-9L</b>
GE180ES-2RS	<b>MB180-9LSS</b>
GE200ES	<b>MB200-9L</b>
GE200ES-2RS	<b>MB200-9LSS</b>
GE220ES	<b>MB220-9L</b>
GE220ES-2RS	<b>MB220-9LSS</b>
GE240ES	<b>MB240-9L</b>
GE240ES-2RS	<b>MB240-9LSS</b>
GE260ES	<b>MB260-9L</b>
GE260ES-2RS	<b>MB260-9LSS</b>
GE280ES	<b>MB280-9L</b>
GE280ES-2RS	<b>MB280-9LSS</b>
GE300ES	<b>MB300-9L</b>
GE300ES-2RS	<b>MB300-9LSS</b>
GEH20ES	<b>MBH2025</b>
GEH20ES-2RS	<b>MBH2025SS</b>
GEH25ES	<b>MBH2530</b>
GEH25ES-2RS	<b>MBH2530SS</b>
GEH30ES	<b>MBH3035</b>
GEH30ES-2RS	<b>MBH3035SS</b>
GEH35ES	<b>MBH3540</b>
GEH35ES-2RS	<b>MBH3540SS</b>
GEH40ES	<b>MBH4045</b>
GEH40ES-2RS	<b>MBH4045SS</b>
GEH45ES	<b>MBH4550</b>
GEH45ES-2RS	<b>MBH4550SS</b>
GEH50ES	<b>MBH5060</b>
GEH50ES-2RS	<b>MBH5060SS</b>
GEH60ES	<b>MBH6070</b>

# Spherical Plain Bearings Interchange



SKF	RBC
GEH60ES-2RS	MBH6070SS
GEH70ES	MBH7080
GEH70ES-2RS	MBH7080SS
GEH80ES	MBH8090
GEH80ES-2RS	MBH8090SS
GEH90ES	MBH90100
GEH90ES-2RS	MBH90100SS
GEH100ES	MBH100110
GEH100ES-2RS	MBH100110SS
GEH110ES	MBH110120
GEH110ES-2RS	MBH110120SS
GEH120ES	MBH120140
GEH120ES-2RS	MBH120140SS
GEM20ES-2RS	MB20ESS
GEM50ES-2RS	MB50ESS
GEM60ES-2RS	MB60ESS
GEM70ES-2RS	MB70ESS
GEM80ES-2RS	MB80ESS
GEM90ES-2RS	MB90ESS
GEM140ES-2RS	MBH1401609LSS
GEZ008ES	B8L
GEZ010ES	B10L
GEZ012ES	B12L
GEZ012ES-2RS	B12LSS
GEZ014ES	B14L
GEZ014ES-2RS	B14LSS
GEZ100ES	B16L
GEZ100ES-2RS	B16LSS
GEZ104ES	B20L
GEZ104ES-2RS	B20LSS
GEZ106ES	B22L
GEZ106ES-2RS	B22LSS
GEZ108ES	B24L
GEZ108ES-2RS	B24LSS
GEZ112ES	B28L
GEZ112ES-2RS	B28LSS
GEZ200ES	B32L
GEZ200ES-2RS	B32LSS
GEZ204ES	B36L
GEZ204ES-2RS	B36LSS
GEZ208ES	B40L
GEZ208ES-2RS	B40LSS
GEZ212ES	B44L
GEZ212ES-2RS	B44LSS
GEZ300ES	B48L
GEZ300ES-2RS	B48LSS
GEZ304ES	B52L
GEZ304ES-2RS	B52LSS
GEZ308ES	B56L
GEZ308ES-2RS	B56LSS
GEZ312ES	B60L
GEZ312ES-2RS	B60LSS
GEZ400ES	B64L
GEZ400ES-2RS	B64LSS
GEZ408ES	B72-9L
GEZ408ES-2RS	B72-9LSS
GEZ500ES	B80-9L
GEZ500ES-2RS	B80-9LSS
GEZ600ES	B96-9L
GEZ600ES-2RS	B96-9LSS
GEZH104ES	BH2024L
GEZH104ES-2RS	BH2024LSS
GEZH108ES	BH2428L

SKF	RBC
GEZH108ES-2RS	BH2428LSS
GEZH112ES	BH2832L
GEZH112ES-2RS	BH2832LSS
GEZH200ES	BH3236L
GEZH200ES-2RS	BH3236LSS
GEZH204ES	BH3640L
GEZH204ES-2RS	BH3640LSS
GEZH208ES	BH4044L
GEZH208ES-2RS	BH4044LSS
GEZH212ES	BH4448L
GEZH212ES-2RS	BH4448LSS
GEZH300ES	BH4852L
GEZH300ES-2RS	BH4852LSS
GEZH304ES	BH5256L
GEZH304ES-2RS	BH5256LSS
GEZH308ES	BH5660L
GEZH308ES-2RS	BH5660LSS
GEZH312ES	BH6064L
GEZH312ES-2RS	BH6064LSS
GEZH400ES	BH6472-9L
GEZH400ES-2RS	BH6472-9LSS
GEZH408ES	BH7280-9L
GEZH408ES-2RS	BH7280-9LSS
GEZH508ES	BH8896-9L
GEZH508ES-2RS	BH8896-9LSS
GEZM008ES	B8EL
GEZM010ES	B10EL
GEZM012ES	B12EL
GEZM012ES-2RS	B12ELSS
GEZM014ES	B14EL
GEZM014ES-2RS	B14ELSS
GEZM100ES	B16EL
GEZM100ES-2RS	B16ELSS
GEZM104ES	B20EL
GEZM104ES-2RS	B20ELSS
GEZM106ES	B22EL
GEZM106ES-2RS	B22ELSS
GEZM108ES	B24EL
GEZM108ES-2RS	B24ELSS
GEZM112ES	B28EL
GEZM112ES-2RS	B28ELSS
GEZM200ES	B32EL
GEZM200ES-2RS	B32ELSS
GEZM204ES	B36EL
GEZM204ES-2RS	B36ELSS
GEZM208ES	B40EL
GEZM208ES-2RS	B40ELSS
GEZM212ES	B44EL
GEZM212ES-2RS	B44ELSS
GEZM300ES	B48EL
GEZM300ES-2RS	B48ELSS
GEZM304ES	B52EL
GEZM304ES-2RS	B52ELSS
GEZM308ES	B56EL
GEZM308ES-2RS	B56ELSS
GEZM312ES	B60EL
GEZM312ES-2RS	B60ELSS
GEZM400ES	B64EL
GEZM400ES-2RS	B64ELSS
GEZM408ES	B72E9L
GEZM408ES-2RS	B72E9LSS
GEZM508ES	B80E9L
GEZM508ES-2RS	B80E9LSS

TORRINGTON	RBC
5SFB	B8L
6SF10	B10L
7SBT12	B12SA
7SF12	B12L
7SF12-TT	B12LSS
8SF14	B14L
8SF14-TT	B14LSS
10SBT16	B16SA
10SF16	B16L
10SF16-TT	B16LSS
12SBT20	B20SA
12SF20	B20L
12SF20-TT	B20LSS
13SBT22	B22SA
13SF22	B22L
15SBT24	B24SA
15SF24	B24L
15SF24-TT	B24LSS
17SF28	B28L
17SBT28	B28SA
17SF28-TT	B28LSS
20SBT32	B32SA
20SF32	B32L
20SF32-TT	B32LSS
22SBT36	B36SA
22SF36	B36L
22SF36-TT	B36LSS
25SBT40	B40SA
25SF40	B40L
25SF40-TT	B40LSS
27SF44	B44L
27SBT44	B44SA
27SF44-TT	B44LSS
30SF48	B48L
30SF48-TT	B48LSS
32SBT52	B52SA
32SF52	B52L
32SF52-TT	B52LSS
35SBT56	B56SA
35SF56	B56L
35SF56-TT	B56LSS
37SF60	B60L
37SF60-TT	B60LSS
40SBT64	B64SA
40SF64	B64L
45SBB72	B72-9L
50SBB80	B80-9L
50SBB80-TT	B80-9LSS
60SBB96	B96-9L
60SBB96-SS	B96-9LSS
GAZ300SAIR	IRB48SA

RBC Bearings® has been producing bearings in the USA since 1919. In addition to unique custom bearings, RBC Bearings® offers a full line of standard industrial and aerospace bearings, including:



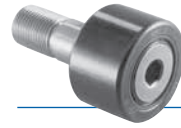
### Tapered Roller Thrust Bearings

Case-hardened tapered roller thrust bearings for oilfield top drives and swivels. Available in full complement, maximum capacity versions.



### Thin Section Ball Bearings

Standard cross sections to one inch. Bore sizes to 40 inches. Stainless steel and other materials are available. Seals are available on all sizes and standard cross sections. Super duplex configurations.



### Cam Followers

Standard stud, heavy stud, yoke type, caged roller followers. Patented RBC Roller® cylindrical roller cam followers, HexLube® universal cam followers, airframe track rollers.



### Cylindrical Roller Bearings

Cylindrical roller bearings designed for mud pump pinion and eccentric positions. Fully interchangeable to industry standards.



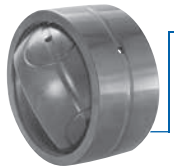
### Needle Roller Bearings

Pitchline® caged heavy duty needle roller bearings ideal for cross head bearings applications. These double row bearings are available in single row and TandemRoller® versions.



### Commercial Rod Ends

Commercial and industrial, precision, Mil-Spec series, self-lubricating, and aircraft. Sold under the Heim®, Unibal®, and Spherco® names. Available in inch and metric sizes.



### Spherical Plain Bearings

Radial, angular contact, extended inner ring, high misalignment. QuadLube®, ImpactTuff®, SpreadLock® Seal, CrossLube®, DuraLube™, and self-lubricating bearings. Available in inch and metric sizes.



### Tapered Roller Bearings

Single, double, & multi row versions available for main bearing positions in mud pumps, gear boxes, etc. Bearings are constructed of case hardened steel washers and rollers with bore size of 11" or greater.



### TP Series Bearings

RBC Bearings® TP Series cylindrical roller thrust bearings ideal for crane hooks, oil well swivels, winch systems, and gear boxes. Fully interchangeable with industry standard offering.



### Keyless Locking Devices

Mechanical bushings used to connect power transmission components onto rotating shafts. Without the use of keyways, KLDs eliminate the problems associated with backlash including fretting, corroding, and wallowing.



### Lubron® Bearings

Lubron® self-lubricating bearings designed and custom manufactured in most any size, material and bearing configuration. Applications include hydro power and water control, nuclear power generation, infrastructure, architecture, offshore marine, industrial, machinery and heavy equipment.



### Shaft Collars

Used to position or locate a component on a shaft. Made from mild steel, type 303 or 316 stainless steel, aluminum, or acetal. Available in inch and metric sizes.



### Self-Lubricating Bearings

Radial, thrust, rod ends, spherical bearings, high temperature, high loads. Available in inch and metric sizes. Fiberglide® self-lubricating bearings.



### Rigid Couplings

Shaft couplings serve as components to time, join, or align shafts at lower speeds and torque, especially when zero backlash is desired. Made from mild steel with a black oxide finish type 303 stainless steel, or aluminum. Available in inch and metric sizes.



### Specials

RBC Bearings® manufactures many specialty bearings for the aerospace, oil and energy, semiconductor equipment, packaging, transportation, and other industries.



### Ball Bearings

Precision ground, semiground, unground. High loads, long life, smooth operation. Nice® branded products are offered in caged and full complement configurations.



### PIC Design®

Complete line of precision gears, precision hardware, timing belts, pulleys, and linear motion systems. Industries served include industrial, aerospace, defense, medical, robotics and automation, material handling, and assembly. Custom design support for unique applications.

