

# RBC<sup>®</sup> Lubron<sup>™</sup> Bearing Systems

A Global Leader in Crane Bearings



+1 (714) 841-3007  
[www.rbcbearings.com](http://www.rbcbearings.com)  
[sales@rbcbearings.com](mailto:sales@rbcbearings.com)

**RBC**<sup>®</sup>  
BEARINGS

Version No. 101  
Last Revised: 03/13/2015

# RBC<sup>®</sup> LUBRON<sup>™</sup> BEARING SYSTEMS



We design custom manufactured self-lubricating bearings for demanding applications and tough operating conditions. Our products are used in some of the largest and most critical applications on the planet; from power generation to bridge supports, from rocket launching to subsea oil production, from high load machinery to earthquake seismic isolation.

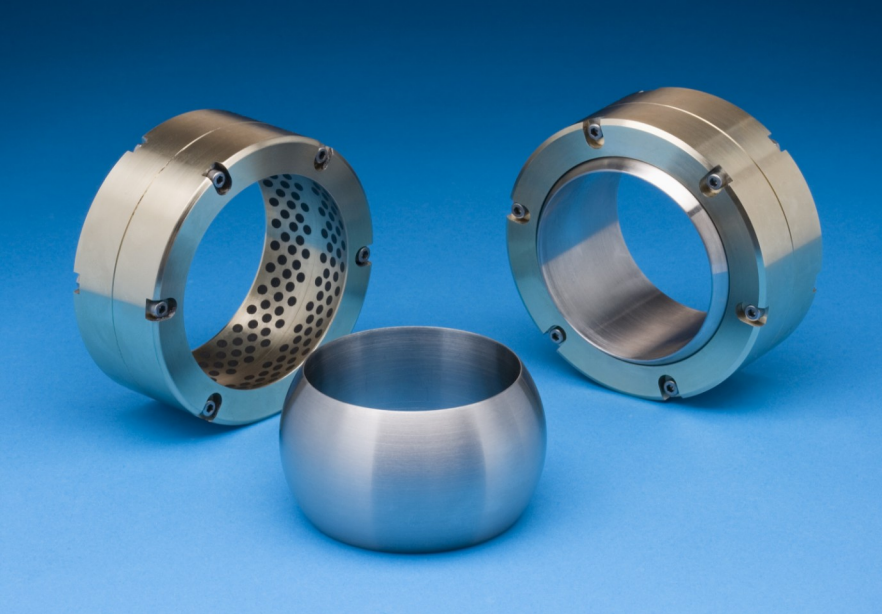


# LUBRON™ BEARING CAPABILITIES



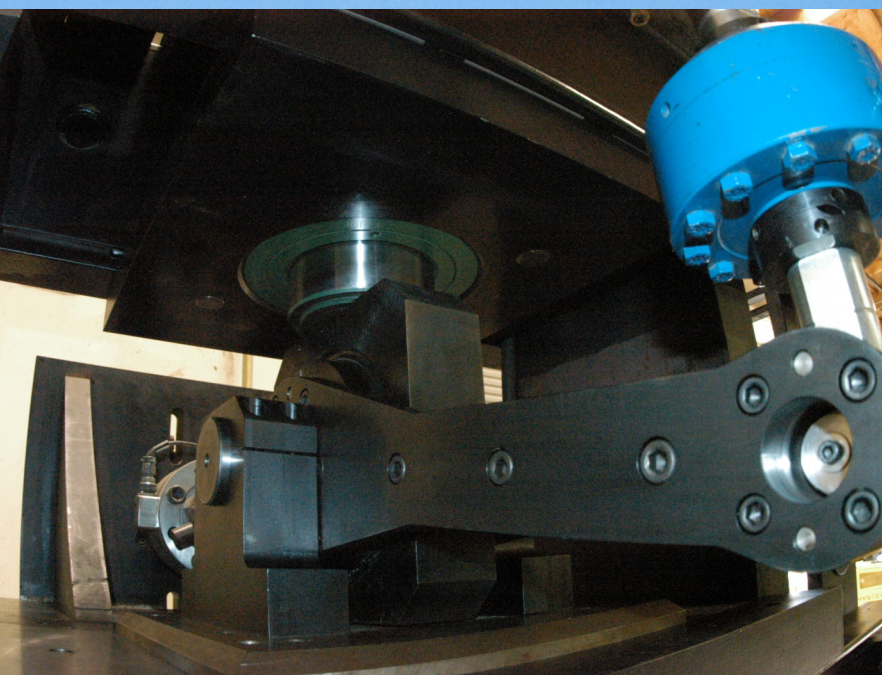
## Manufacturing

Our manufacturing facilities are state of the art, flexible and capable of complex tasks with precision accuracy. Our diverse design and manufacturing skills combine to assure consistent quality and reliable performance.



## Quality Assurance

Lubron™ self-lubricating bearings are manufactured and inspected in strict accordance with the requirements of ISO 9001. Our bearings meet the demanding requirements of nuclear and military projects.



## Testing & Development

Prototype and full scale production testing is performed in house or by independent testing laboratories. In-house equipment includes hydraulic presses capable of sliding and rotational movement. Maximum vertical load testing capacity of 4,000,000 pounds.

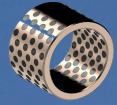
# LUBRON™ BEARING APPLICATIONS

Servicing the crane industry for over 30 years, Lubron™ is experienced in crane applications and requirements. Widely used in industrial and structural applications Lubron™ bearings are:

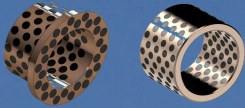
- Custom built for specialized needs
- Have a low coefficient of friction for medium to heavy loads
- Use high strength materials to ensure superior performance in application
- Proprietary self-lubricating systems

Location	Application	Lubron Part
Articulating Girder	Bottom Pivot Pin	 <p><a href="#">SL30 Bushing</a></p>
Back Mast	Mast Foot Plain Bearing Mast Head Equalizer: Sheave Hub Plain Bearing Mast Head Equalizer Connection Pin Tension Tie Column Pin	
Equalizer Beam	Pivot Pin	
Trunnion	Load Block	
Main Boom	Boom Head: Pendant Connection Pin	
Reeving	Main Boom: Pendant Pain Bearing Load Block Sheave Block Pivot Pin Plain Bearing	
Tension Tie Column	Cross Journal Plain Bearing	
Wheel Truck	Guide Wheel Eccentric Spindle Pivot Pin	
Foot Pin	Foot Pin Sleeve Spacer: Boom Foot Pin Sleeve Spacer: Mast	
Articulating Girder	Equalizer Saddle Gudgeon: Slide Ring Bronze	
Equalizer Beam	Truck Saddle Gudgeon: Slide Ring Bronze	
Foot Pin	Foot Pin Wear Spacer	
Tension Tie Column	Cross Journal Spacer	
Back Mast	Mast Head Equalizer: Sheave Hub Wear Spacer	
Heel Girder	Lower Pivot Pin: Floating Spacer	
Articulating Girder	Equalizer Saddle Gudgeon: Shouldered Bushing	<a href="#">SL30 Flanged Bushing</a>
Reeving	Load Block Sheave Block	<a href="#">SL30 SPB</a>
Foot Pin	Main Boom Pin	<a href="#">TF SPB</a>
Ship-to-Shore Gantry Crane		<a href="#">SL30 Bearing Plate</a> <a href="#">TF Bearing Plate</a>

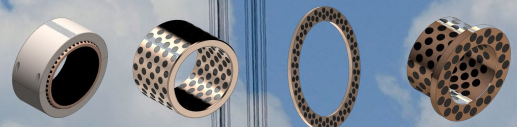
# LUBRON™ BEARING APPLICATIONS



SL30 Bushings used in upper sheave, lower sheave, and guideline plates



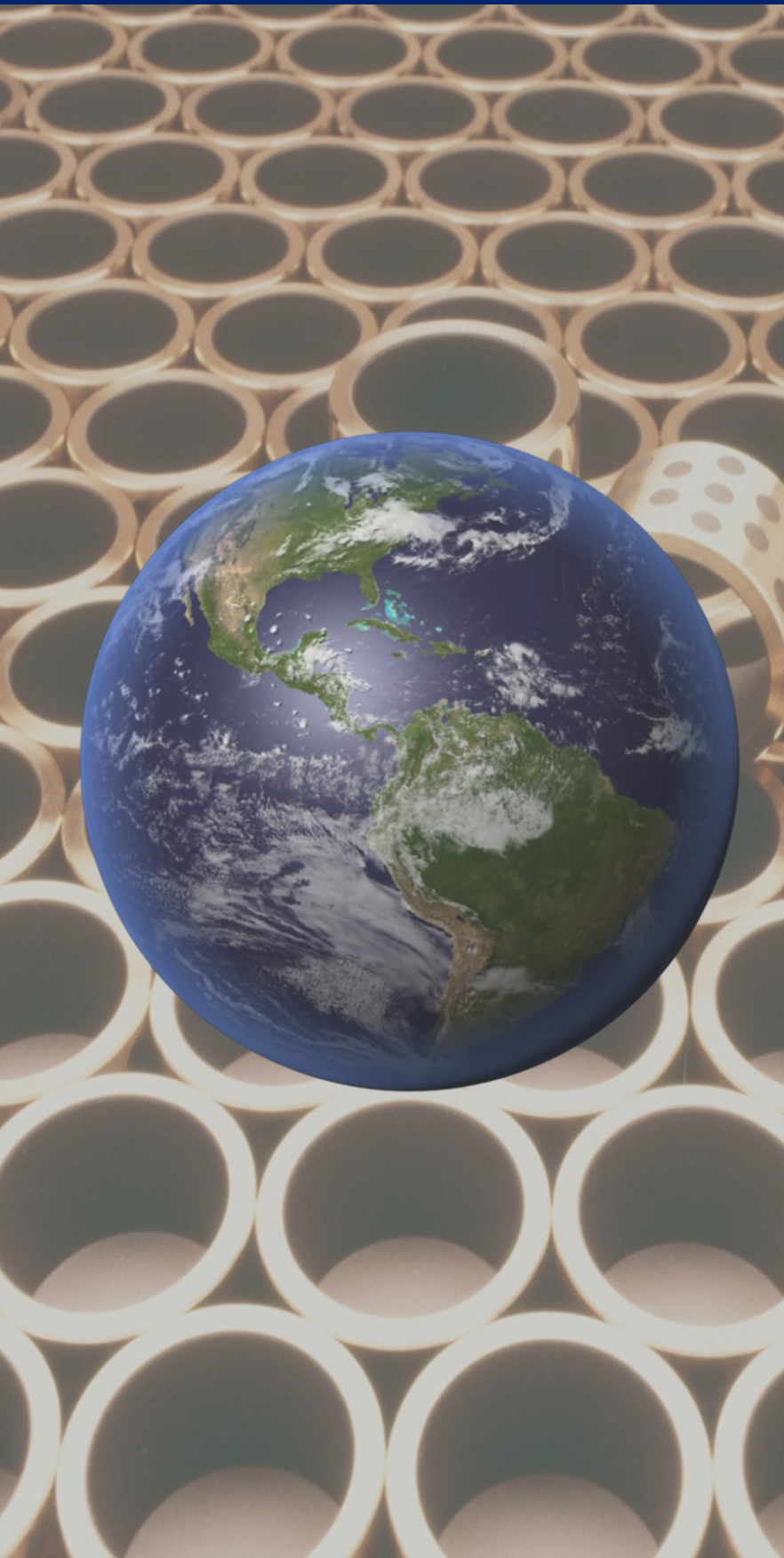
SL30 Bushings & SL30 Flanged Bushings used in tension tie column.



SL30 Bushings, SL30 Spherical Plain Bushings (SPB), SL30 Washers, SL30 Flanged Bushings used in slewing platform and equalizer beam

In 2013, Lubron™ supplied over 300 bearings to the largest heavy lift derrick crane in the world, the BIGGE 125D.

# LUBRON™ BEARING CAPABILITIES



## Engineering Services

We offer services such as custom design, material selection, testing to simulate load, velocity, and temperature, and other conditions during the operation of Lubron™ maintenance free bearings. Services are available upon request.

## Emergency Services

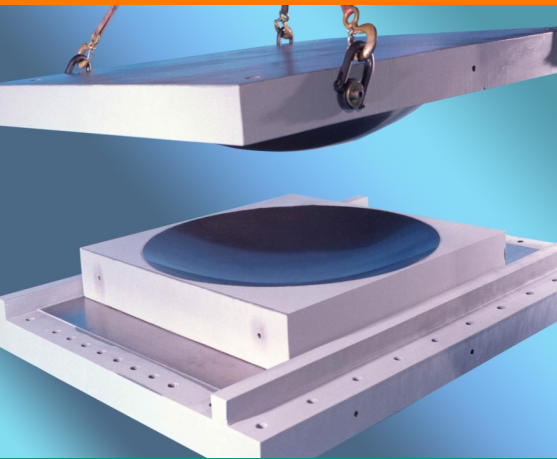
Lubron™ is able to provide immediate assistance. Our technical team provides quick turn-around for short deliveries and emergency breakdowns. We have an advantage over our competition with the ability to expedite orders on demand.

Bearings to **Support** the World.

# RBC® LUBRON™ BEARING SYSTEMS PRODUCTS

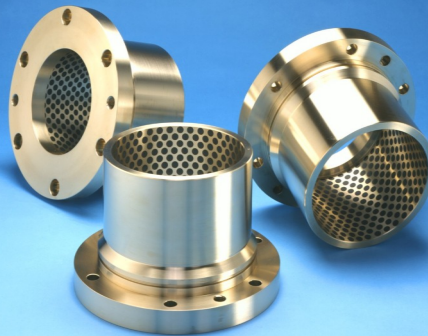
## LUBRON™ TF

Offer exceptional performance for high load low friction applications. Constructed of woven PTFE fabric liners permanently bonded and mechanically locked to rigid bronze, stainless steel or fiberglass backings. Capable of very low friction and high wear resistance.



## LUBRON™ AQ

The proven choice for hydro and marine applications. Composed of high strength bronze alloys permanently embedded with PTFE solid lubricants, suited for underwater applications, specified by water power authorities and engineering companies worldwide.



## LUBRON™ SL

Widely used in industrial and structural applications for moderate to heavy loads and cryogenic to elevated temperatures. Solid graphite lubricants are compounded and compressed into trepanned or circular recesses. Available in a combination with bronze, copper-nickel-tin, and Meehanite® alloys.



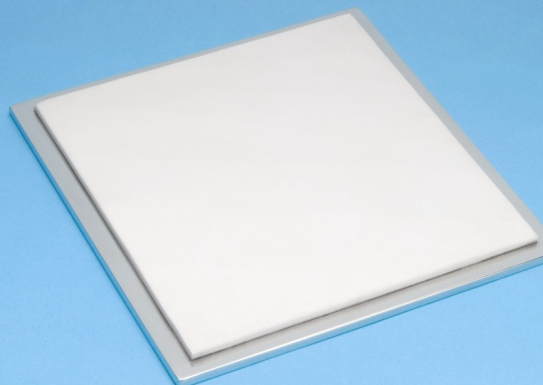
## FIBERGLIDE®

Ideal for oscillation, vibration, full rotation and linear applications. Wrapped bushings, wear plates, and thrust washers are available in both metal and non-metal backed options. Fiberglide® excels in the 2000 to 10,000 psi load spectrum and has a low coefficient of friction



## LUBRON™ TR

Used for low friction and moderate load applications. Consist of pure PTFE or glass-filled PTFE resin sheets bonded to either/or a combination of carbon steel, stainless steel, reinforced elastomer or neoprene substrates. Recommended for loads up to 2000 psi.



## LUBRON™ AE

Designed for use in nuclear power plants and nuclear powered vessels. Capable of withstanding high radiation and high temperatures. Lubron™ AE near-isotropic nuclear grade graphite solid lubricants are employed to provide long and reliable service life.



# Innovation. Commitment. Quality.



**NICE**<sup>®</sup>  
Ball Bearings



**Thin Sections**  
Thin Section Bearings



**RBC Roller**<sup>®</sup>  
Cam Followers



**Heim**<sup>®</sup>  
Rod Ends & Spherical Plain Bushings



**Pitchlign**<sup>®</sup>  
HD Needle Bearings



**Aerospace Bearings**



**QuadLube**<sup>®</sup>  
Spherical Plain Bearings



**Large Bore**  
Large Bore Ball, Tapered & Cylindrical Bearings



**Fiberglide**<sup>®</sup>  
Maintenance-free Bushings



**Lubron**<sup>™</sup>  
Extreme Service Bearings



**TRTBs**  
Tapered Roller Thrust Bearings



**PIC Design**<sup>®</sup>  
Precision Gears & Belts



**Precision Products**  
Precision Pins & Shafts



**Climax**<sup>™</sup>  
Engineered Shaft Locking Solutions



**CRTBs**  
Cylindrical Roller & Thrust Bearings