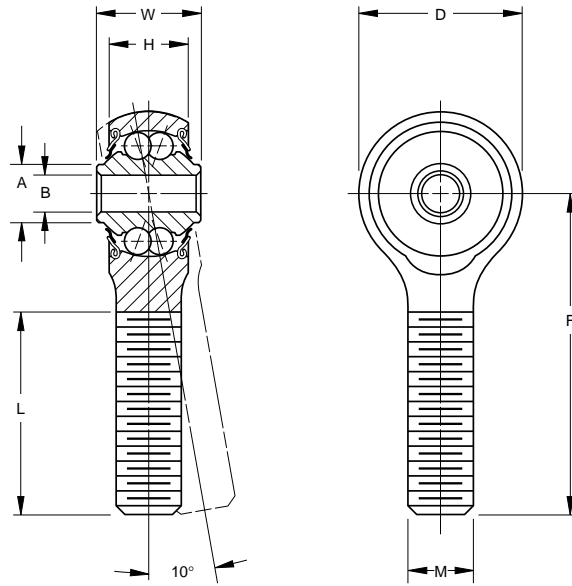


MS21151 • SAE-AS6039

- Precision series
- Double row, ball, self-aligning
- 10° permissible misalignment in either direction
- These bearings are manufactured with an internal play of .0004 in. (.010mm) max.
- Inner and outer raceway surface finish = 8 micro in. AA max.
- Equipped with PTFE seals
- Exposed surfaces except bore, cap, and seals are cadmium plated
- Outer shank – 90,000 psi min. tensile strength
- Pre-lubricated (refer to nomenclature page)



SPECIFICATIONS AND ORDERING INFORMATION

TO ORDER, SPECIFY BEARING NUMBER AND FACTORY SPECIFICATION. SEE TABLE 1 ON PG 8. (Example REP3MR3 FS464)

Bearing Number	MS 21151 Dash No.	Bore B		Outside Diameter D		Widths		A		F		L ⁽¹⁾		M UNJF-3A Threads Per AS8879	Wt.		Radial Limit Load Rating			
		+0.0000,-.0003 +0.000,-.008		±.010 ±.25		+0.000,-.005 +0.00,-.13		±.010 ±.25		Approx.		±.010 ±.25			±.031 ±.79			Approx.		
		in.	mm	in.	mm	in.	mm	in.	mm	in.	mm	in.	mm		lbs.	kg		lbf.	N	
REP3MR3	-2	0.1900	4.826	0.781	19.84	0.437	11.10	0.328	8.33	0.281	7.14	1.375	34.92	0.750	19.05	10-32RH	0.04	0.018	1000	4400
REP3ML3	-1	0.1900	4.826	0.781	19.84	0.437	11.10	0.328	8.33	0.281	7.14	1.375	34.92	0.750	19.05	10-32LH	0.04	0.018	1000	4400
REP3M4-6	-7	0.1900	4.826	0.781	19.84	0.437	11.10	0.328	8.33	0.281	7.14	1.562	39.67	1.000	25.40	¼-28RH	0.05	0.023	1000	4400
REP3MS4-6 ⁽²⁾	-7C	0.1900	4.826	0.781	19.84	0.437	11.10	0.328	8.33	0.281	7.14	1.562	39.67	1.000	25.40	¼-28RH	0.05	0.023	1000	4400
REP3M6-2N	-4	0.1900	4.826	0.781	19.84	0.437	11.10	0.328	8.33	0.281	7.14	1.375	34.92	0.750	19.05	¼-24RH	0.05	0.023	1000	4400
REP3MS6-2N ⁽²⁾	-4C	0.1900	4.826	0.781	19.84	0.437	11.10	0.328	8.33	0.281	7.14	1.375	34.92	0.750	19.05	¼-24RH	0.05	0.023	1000	4400
REP3ML6-2N	-5	0.1900	4.826	0.781	19.84	0.437	11.10	0.328	8.33	0.281	7.14	1.375	34.92	0.750	19.05	¼-24LH	0.05	0.023	1000	4400
REP3MLS6 ⁽²⁾	-5C	0.1900	4.826	0.781	19.84	0.437	11.10	0.328	8.33	0.281	7.14	1.375	34.92	0.750	19.05	¼-24LH	0.05	0.023	1000	4400
RAP3M4-2	-6	0.1900	4.826	0.781	19.84	0.500	12.70	0.438	11.13	0.312	7.92	1.812	46.02	0.938	23.83	¼-28RH	0.10	0.045	1000	4400
RAP3MS4-2 ⁽²⁾	-6C	0.1900	4.826	0.781	19.84	0.500	12.70	0.438	11.13	0.312	7.92	1.812	46.02	0.938	23.83	¼-28RH	0.10	0.045	1000	4400
REP3M6A	-3	0.1900	4.826	0.969	24.61	0.500	12.70	0.407 ⁽⁴⁾	10.34	0.304	7.72	2.031	51.59	1.313	33.35	¼-24RH	0.115	0.052	1200	5300
REP3MS6A ⁽²⁾	-3C	0.1900	4.826	0.969	24.61	0.500	12.70	0.407 ⁽⁴⁾	10.34	0.304	7.72	2.031	51.59	1.313	33.35	¼-24RH	0.115	0.052	1200	5300
REP4M6	-8	0.2500	6.350	0.938	23.83	0.593	15.06	0.438	11.13	0.345	8.76	1.875	47.62	1.125	28.58	¼-24RH	0.10	0.045	1720	7650
REP4M6-4 ⁽²⁾	-8C	0.2500	6.350	0.938	23.83	0.593	15.06	0.438	11.13	0.345	8.76	1.875	47.62	1.125	28.58	¼-24RH	0.10	0.045	1720	7650
REP4ML6	-9	0.2500	6.350	0.938	23.83	0.593	15.06	0.438	11.13	0.345	8.76	1.875	47.62	1.125	28.58	¼-24LH	0.10	0.045	1720	7650
REP4ML6-4 ⁽²⁾	-9C	0.2500	6.350	0.938	23.83	0.593	15.06	0.438	11.13	0.345	8.76	1.875	47.62	1.125	28.58	¼-24LH	0.10	0.045	1720	7650
REP5M6	-10	0.3125	7.938	1.250	31.75	0.870	22.10	0.656	16.66	0.506	12.85	2.438	61.93	1.563	39.70	¼-24RH	0.24	0.109	2920	12900
REP5M6-2 ⁽²⁾	-10C	0.3125	7.938	1.250	31.75	0.870	22.10	0.656	16.66	0.506	12.85	2.438	61.93	1.563	39.70	¼-24RH	0.24	0.109	2920	12900
REP5M7	-11	0.3125	7.938	1.250	31.75	0.870	22.10	0.656	16.66	0.506	12.85	2.438	61.93	1.563	39.70	⅜-20RH	0.24	0.109	2920	12900
REP5MS7 ⁽²⁾	-11C	0.3125	7.938	1.250	31.75	0.870	22.10	0.656	16.66	0.506	12.85	2.438	61.93	1.563	39.70	⅜-20RH	0.24	0.109	2920	12900
REP5M10	-12	0.3125	7.938	1.250	31.75	0.870	22.10	0.656	16.66	0.506	12.85	2.438	61.93	1.563	39.70	¼-18RH	0.24	0.109	2920	12900
REP5MS10 ⁽²⁾	-12C	0.3125	7.938	1.250	31.75	0.870	22.10	0.656	16.66	0.506	12.85	2.438	61.93	1.563	39.70	¼-18RH	0.24	0.109	2920	12900
REP8M10 ⁽³⁾	-	0.5000	12.700	1.875	47.62	1.000	25.40	0.844	21.44	0.688	17.48	3.031	76.99	1.750	44.45	¼-18RH	0.55	0.249	6900	30500
RAP10M10	-13	0.6250	15.875	2.000	50.80	1.125	28.58	0.938	23.83	0.875	22.22	2.750	69.85	1.500	38.10	¼-18RH	0.71	0.322	7090	31500
RAP10MS10 ⁽²⁾	-13C	0.6250	15.875	2.000	50.80	1.125	28.58	0.938	23.83	0.875	22.22	2.750	69.85	1.500	38.10	¼-18RH	0.71	0.322	7090	31500

⁽¹⁾ Length includes maximum of two incomplete threads.

⁽²⁾ NAS 513 keyway in shank.

⁽³⁾ 5° permissible misalignment in either direction.

⁽⁴⁾ +.000 in. (+.00 mm), -.015 in. (-.38mm).