

**SCHAUBLIN**

Switzerland 

SCHAUBLIN SA  
Rue de la Blancherie 9  
CH - 2800 Delémont

office.d@schaublin.ch  
+41 (0) 32 421 13 00  
www.schaublin.ch



**SWISS TOOLS**

Switzerland 


SWISS TOOLS SYSTEMS AG  
Wydenstrasse 28  
CH - 8575 Bürglen

info@swisstools.org  
+41 (0) 71 634 85 20  
www.swisstools.org



Sales Offices

**Schaublin GmbH**

Germany 

SCHAUBLIN GMBH  
Birkenweiherstr. 12  
63505 Langenselbold - Germany

info@schaublin.de  
+49 6184 93 27 20  
www.schaublin.de


**Schaublin USA, INC**

United States 

SCHAUBLIN USA, INC  
One Tribology Center  
102 Willenbrock Road  
06478 Oxford, CT - United States

office@schaublin.com  
+1 215 672 33 90  
www.schaublin.ch

**RBC France SAS**

France 

RBC France SAS  
9, Avenue du Canada  
Parc HIGHTEC, bâtiment LE MERIDIEN  
FR-91940 LES ULIS Cedex

info@rbcfrence.com  
+33 (0) 160 921 735  
www.rbcfrance.com

**Schaublin Shanghai**

China 

RBC SHANGHAI Rep. Office  
Building T3, Room 1907, Raffles City  
1193 Changning Rd,  
China - 200051 Shanghai

schaublin-asia@schaublin.com  
+86 (0)21 5425 5184

美国滚子轴承公司上海代表处  
地址: 上海市长宁区长宁路1193号  
长宁来福士广场T 3-1907  
邮编: 200051

**SWISS TOOLS**



**SCHAUBLIN**



Look to our complete portfolio  
of products on our websites

Subsidiary of: 

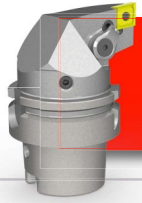
Copyright © 2024 SCHAUBLIN S.A., All Rights Reserved

 Swiss Quality

Version EN 02.24

# TURNING SOLUTIONS

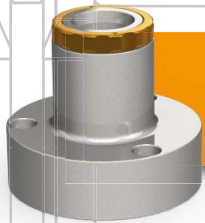
ALL THE TOOLS YOU NEED FOR YOUR LATHE



**External Turning**  
High Performance Coolant



**HP**  
ready



**Chuck for turning**  
A2-4 / A2-5 / A2-6

# SCHAUBLIN



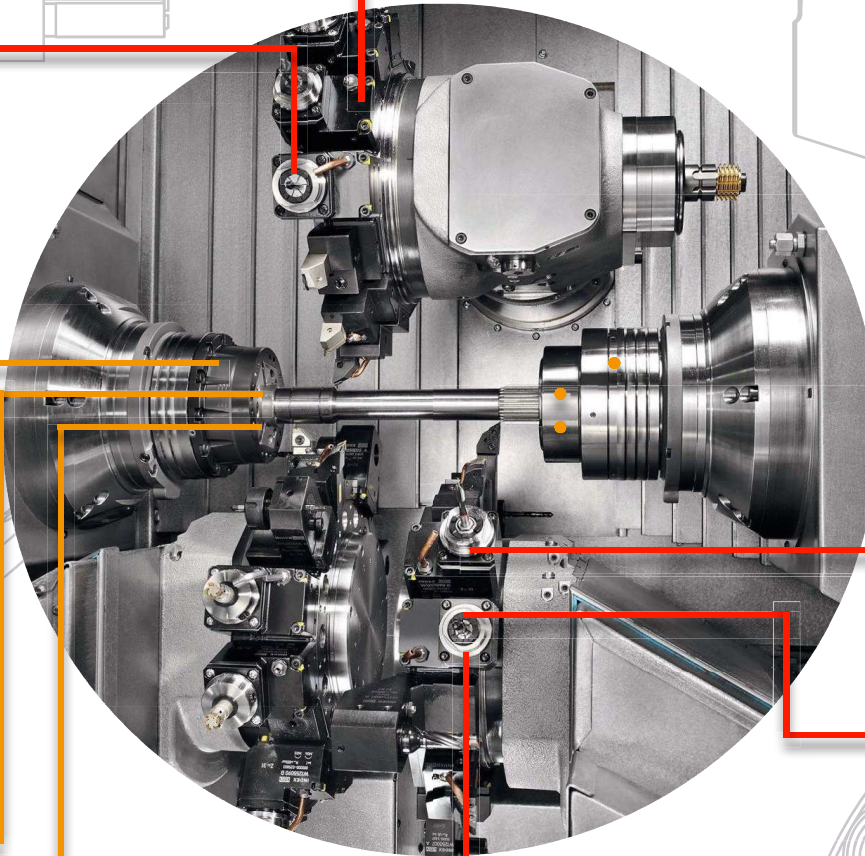
**Collets**



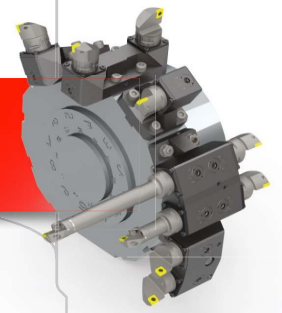
**Expanding Arbors**



CATALOG



**Base tool holders**  
PSC / HSK / KM

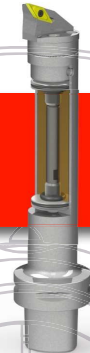


# SWISS TOOLS

**Internal Turning**



**Damped boring shanks**



**Exchangable cutting heads**



PSC



HSK



KM