



Rod Ends and Spherical Bearings Interchange Table

HEIM[®] BEARINGS **SPHERCO[®]**

RBC Bearings		Rod End Bearings - Male					
Heim	Spherco		Aurora	SealMaster	Alinabal	FK Bearings	QA1
HM	TRE	4-pc Metal-to-Metal	MM / MB	TRE	VM_-_G	M_SB / JM	KM
HMX	ARE_20	4-pc Heavy Duty Shank		ARE_-_20			
BHM_C	ARE	3-pc Extra Capacity	AM / AB	ARE	RM_-_X5	JMX	HM
M_CR	CFM	2-pc Metal-to-Metal	CM / CB	CFM	AM_-_GP	CM	CM
M_CRT	CFM_T	2-pc with PTFE	VCM / VCB	CFM_T	AMT_-_GP	CM_T	CM_T
CMHD	CTMD	3-pc Thermoplastic Race	SPM / SPB	CTMD	PM_-_G	NJM	NM
HM_SS		3-pc Metal- to-Metal Stainless Steel	SM_E / SB_E			SJM	
M_CRTSS		2-pc Stainless Steel with PTFE	CM_ET / CB_ET			SCM_T	GM_T
HMX_DC		3-pc Heavy Duty Shank	XM / XB			RSM	
HMX_DA		3-pc High Strength - Heavy Duty Shank	XAM / XAB			RSMX	
MHJ		3-pc Slot Loader with Injection Molded Race				KMX	XM
MT		SAE AS81935/1	ASM_T / ASB_T				
RBC Bearings		Rod End Bearings - Female					
Heim	Spherco		Aurora	SealMaster	Alinabal	FK Bearings	QA1
HF	TR	4-pc Metal-to-Metal	MW / MG	TR	VF_-_G	F_SB / JF	KF
HFX_C	AR	3-pc Extra Capacity	AW / AG	AR		JFX	HF
F_CR	CFF	2-pc Metal-to-Metal	CW / CG	CFF	AF_-_GP	CF	CF
F_CRT	CFF_T	2-pc with PTFE	VCW / VCG	CFF_T	AFT_-_GP	CF_T	CF_T
CFHD	CTFD	3-pc Thermoplastic Race	SPW / SPG	CTFD	PF_-_G	NJF	NF
HF_SS		3-pc Metal- to-Metal Stainless Steel	SW_E / SG_E			SJF	
F_CRTSS		2-pc Stainless Steel with PTFE	CW_ET / CG_ET			SCF_T	GF_T
FHJ		3-pc Slot Loader with Injection Molded Race					XF
FT		SAE AS81935/2	ASW_-_T / ASG_T				
RBC Bearings		Spherical Bearings					
Heim	Spherco		Aurora	SealMaster	Alinabal	FK Bearings	QA1
LSS	FSBG	4-pc Metal-to-Metal, Copper Alloy Insert		FSBG			
LS	FLBG	4-pc Metal-to-Metal, Brass Insert	LCOM	FLBG			
LHA	SBG_S	2-pc Metal-to-Metal, Alloy Race & Ball	COM-KH	SBG_S			
LH_D	BH_LS	2-pc Metal-to-Metal, Carbon Steel Race & Alloy Ball	HCOM			COMH	HCOM
LHSS	SBG_SS	2-pc Metal-to-Metal, Stainless Steel Race & Ball	COM-_E				COM_SS
COM	COM	2-pc Metal-to-Metal, Carbon Steel Race & Alloy Ball	COM	COM	COM_-_E	COM	COM

Heim[®] Add Ons:

L - Left Hand, Y - Stud, G - Zerk Fitting, T - PTFE

The Aurora, SealMaster, Alinabal, FK Bearings and QA1 part names above are used for comparative purposes only, and there is no association, endorsement or sponsorship between RBC Bearings and these companies.

Heim[®] Bearings, The First Name in Rod Ends[™]

RBC Bearings® has been producing bearings in the USA since 1919. In addition to unique custom bearings, RBC Bearings® offers a full line of standard industrial and aerospace bearings, including:



Tapered Roller Thrust Bearings

Case-hardened tapered roller thrust bearings for oilfield top drives and swivels. Available in full complement, maximum capacity versions.



Thin Section Ball Bearings

Standard cross sections to one inch. Bore sizes to 40 inches. Stainless steel and other materials are available. Seals are available on all sizes and standard cross sections. Super duplex configurations.



Cam Followers

Standard stud, heavy stud, yoke type, caged roller followers. Patented RBC Roller® cylindrical roller cam followers, HexLube® universal cam followers, airframe track rollers.



Cylindrical Roller Bearings

Cylindrical roller bearings designed for mud pump pinion and eccentric positions. Fully interchangeable to industry standards.



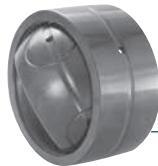
Needle Roller Bearings

Pitchline® caged heavy duty needle roller bearings ideal for cross head bearings applications. These double row bearings are available in single row and TandemRoller® versions.



Commercial Rod Ends

Commercial and industrial, precision, Mil-Spec series, self-lubricating, and aircraft. Sold under the Heim®, Unibal®, and Spherco® names. Available in inch and metric sizes.



Spherical Plain Bearings

Radial, angular contact, extended inner ring, high misalignment. QuadLube®, ImpactTuff®, SpreadLock® Seal, CrossLube®, Duralube™, and self-lubricating bearings. Available in inch and metric sizes.



Tapered Roller Bearings

Single, double, & multi row versions available for main bearing positions in mud pumps, gear boxes, etc. Bearings are constructed of case hardened steel washers and rollers with bore size of 11" or greater.



TP Series Bearings

RBC Bearings® TP Series cylindrical roller thrust bearings ideal for crane hooks, oil well swivels, winch systems, and gear boxes. Fully interchangeable with industry standard offering.



Keyless Locking Devices

Mechanical bushings used to connect power transmission components onto rotating shafts. Without the use of keyways, KLDs eliminate the problems associated with backlash including fretting, corroding, and wallowing.



Lubron® Bearings

Lubron® self-lubricating bearings designed and custom manufactured in most any size, material and bearing configuration. Applications include hydro power and water control, nuclear power generation, infrastructure, architecture, offshore marine, industrial, machinery and heavy equipment.



Shaft Collars

Used to position or locate a component on a shaft. Made from mild steel, type 303 or 316 stainless steel, aluminum, or acetal. Available in inch and metric sizes.



Self-Lubricating Bearings

Radial, thrust, rod ends, spherical bearings, high temperature, high loads. Available in inch and metric sizes. Fiberglide® self-lubricating bearings.



Rigid Couplings

Shaft couplings serve as components to time, join, or align shafts at lower speeds and torque, especially when zero backlash is desired. Made from mild steel with a black oxide finish type 303 stainless steel, or aluminum. Available in inch and metric sizes.



Specials

RBC Bearings® manufactures many specialty bearings for the aerospace, oil and energy, semiconductor equipment, packaging, transportation, and other industries.



Ball Bearings

Precision ground, semiground, unground. High loads, long life, smooth operation. Nice® branded products are offered in caged and full complement configurations.



PIC Design®

Complete line of precision gears, precision hardware, timing belts, pulleys, and linear motion systems. Industries served include industrial, aerospace, defense, medical, robotics and automation, material handling, and assembly. Custom design support for unique applications.

