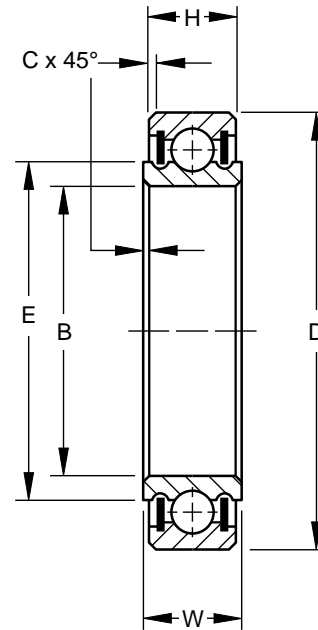


## MS27646 • SAE-AS7949

- Extra light duty
- Single row, ball
- PTFE seals
- Exposed surfaces except bore and seals are cadmium plated
- Prelubricated for life
- This series is dimensionally interchangeable with the unsealed B500 series
- Also offered with CRES 440C material and/or zinc nickel plating per OEM specifications



AIRFRAME CONTROL BALL BEARINGS

## SPECIFICATIONS AND ORDERING INFORMATION

**TO ORDER, SPECIFY BEARING NUMBER AND FACTORY SPECIFICATION. SEE TABLE 1 ON PG 8. (Example B538DD FS464)**

Bearing Number	MS 27646 Dash No.	Bore B		Outside Diameter D		Widths				E	C	Wt.		Radial Limit Load Rating	Thrust Limit Load Rating				
		+0.0007, -0.0007 +0.018, -0.018		+0.0000, -0.0010 +0.000, -0.025		+0.000, -0.005 +0.00, -0.13		+0.000, -0.005 +0.00, -0.13				Approx.				Approx.			
		in.	mm	in.	mm	in.	mm	in.	mm	in.	mm	in.	mm	lbs.	kg	lbf.	N	lbf.	N
B538DD	-38	0.6250	15.875	1.0625	26.988	0.281	7.14	0.250	6.35	0.781	19.84	0.015	0.38	0.03	0.014	3280	14600	1500	6700
B539DD	-39	0.7500	19.050	1.1875	30.163	0.281	7.14	0.250	6.35	0.898	22.81	0.015	0.38	0.04	0.018	3750	16700	1700	7600
B540DD	-40	0.8750	22.225	1.3125	33.338	0.281	7.14	0.250	6.35	1.019	25.88	0.015	0.38	0.05	0.023	4220	18800	1900	8500
B541DD	-41	1.0625	26.988	1.5000	38.100	0.281	7.14	0.250	6.35	1.219	30.96	0.015	0.38	0.06	0.027	5000	22300	2200	9800
B542DD	-42	1.3125	33.338	1.7500	44.450	0.281	7.14	0.250	6.35	1.454	36.93	0.015	0.38	0.09	0.041	5950	26500	2700	12000
B543DD	-43	1.5625	39.688	2.0000	50.800	0.281	7.14	0.250	6.35	1.706	43.33	0.015	0.38	0.10	0.045	6880	30600	3200	14300
B544DD	-44	1.8125 <sup>(1)</sup>	46.038 <sup>(1)</sup>	2.2500 <sup>(2)</sup>	57.150 <sup>(2)</sup>	0.281	7.14	0.250	6.35	1.974	50.14	0.015	0.38	0.11	0.050	7980	35500	3600	16000
B545DD	-45	2.0625 <sup>(1)</sup>	52.388 <sup>(1)</sup>	2.6250 <sup>(2)</sup>	66.675 <sup>(2)</sup>	0.281	7.14	0.250	6.35	2.291	58.19	0.015	0.38	0.15	0.068	9220	41000	4000	17800
B546DD	-46	2.3125 <sup>(1)</sup>	58.738 <sup>(1)</sup>	2.8750 <sup>(2)</sup>	73.025 <sup>(2)</sup>	0.281	7.14	0.250	6.35	2.531	64.29	0.015	0.38	0.17	0.077	10150	45200	4400	19600

<sup>(1)</sup> +0.0010 in. (+0.025mm), -0.0010 in. (-0.025mm).

<sup>(2)</sup> +0.0000 in. (+0.000mm), -0.0015 in. (-0.038mm).