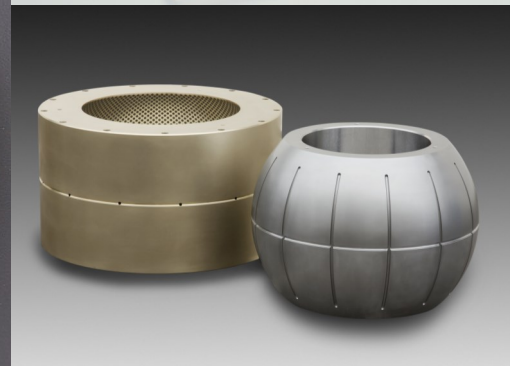


# Industrial Self-Lubricating Bearings

World Leader in Self-Lubricating Liner Systems™



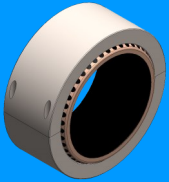
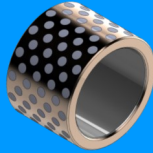
+1 (714) 841-3007  
[www.rbcbearings.com](http://www.rbcbearings.com)  
[sales@rbcbearings.com](mailto:sales@rbcbearings.com)

Version No. 101  
Last Revised: 03/19/2015

# SELF-LUBRICATING BEARING APPLICATIONS

## RBC<sup>®</sup> Lubron<sup>™</sup> Bearing Systems

Lubron<sup>™</sup> self-lubricating bearings have been used in many water applications including valve systems.



Lubron<sup>™</sup> self-lubricating bearings have also been used in heavy machinery and oil rigs around the world.

**Hydraulic Cylinder**



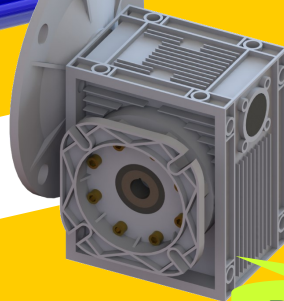
**Butterfly Valve**



**Conveyor System**

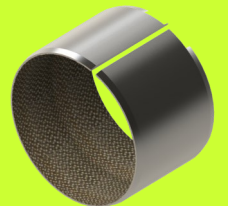


**Power Transmission**



Fiberglide<sup>®</sup> and Lubron<sup>™</sup> self-lubricating products are ideal for a multitude of applications where components are inaccessible as lubrication is unnecessary. These products are offered in different sizes and configurations, giving them the ability to be designed to satisfy customer's needs.




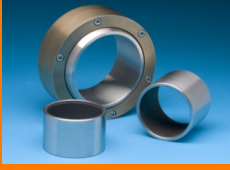

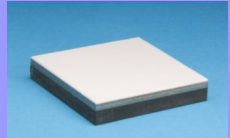
Fiberglide<sup>®</sup> self-lubricating bearings are perfect for your industrial needs including: hydraulic cylinders, conveyor systems, power transmissions, and a wide variety of valve applications.



# Fiberglide<sup>®</sup>

# Product Selection Guide

## Self-Lubricating, Maintenance Free Bearings

Product	Photo	Description	Available		Bushing	Washer
			Inch	Metric		
Fiberglide®		High performance woven PTFE composite liner bonded to a formed steel or special alloy	✓	✓	ID: ≥8mm L: ≥8mm	OD: ≥20mm THK: ≥1.5mm
Fabroid®			✓	✓	ID: ≥8mm L: ≥8mm	OD: ≥20mm THK: ≥1.5mm
AE40™		Purified graphite plug style lubricant covering approximately 40% of bearing surface, specially designed for use in the nuclear industry	✓	✓	ID: ≥50mm L: ≥30mm	OD: ≥50mm THK: ≥10mm
AQ30™		PTFE based composite plug style lubricant covering a minimum of 30% of the bearing surface area	✓	✓	ID: ≥50mm L: ≥30mm	OD: ≥50mm THK: ≥10mm
AQ100™		PTFE based composite lubricant covering 100% of the bearing surface area	✓	✓	ID: ≥50mm L: ≥30mm	OD: ≥50mm THK: ≥10mm
Lubron™ TF		Woven PTFE composite liner covering 100% of bearing surface area	✓	✓	ID: ≥30mm L: ≥30mm	OD: ≥50mm THK: ≥10mm
SL30™		Graphite composite plug style solid lubricant covering a minimum of 30% of the bearing surface area	✓	✓	ID: ≥50mm L: ≥30mm	OD: ≥50mm THK: ≥10mm
SL40™		Solid graphite plug style lubricant covering approximately 40% of bearing surface area	✓	✓	ID: ≥50mm L: ≥30mm	OD: ≥50mm THK: ≥10mm
Lubron™ TR		PTFE resin liner (virgin or filled with support fibers)	✓	✓	N/A	OD: ≥50mm THK: ≥10mm

Spherical Bearings							Spherical Plates	
Spherical Bearings			Spherical Plates				Spherical Plates	
Plate	Spherical Bearing	Spherical Plate	Debris Resistance	Maximum Temperature	Operation in Water	Load (maximum)	Coefficient of Friction	
N/A	N/A	N/A	Sensitive	150 °C	Good	Static: 275 N/mm <sup>2</sup> Dynamic: 140 N/mm <sup>2</sup>	0.04 – 0.10	
N/A	N/A	N/A	Sensitive	150 °C	Good	Static: 262 N/mm <sup>2</sup> Dynamic: 140 N/mm <sup>2</sup>	0.03 – 0.10	
W: ≥50mm L: ≥50mm THK: ≥10mm	ID: ≥50mm OD: ≥80mm W: ≥30mm	DIA ≥150mm	Excellent	450 °C	Average	Static: 82 N/mm <sup>2</sup> Dynamic: 55 N/mm <sup>2</sup>	0.10 - 0.30	
W: ≥50mm L: ≥50mm THK: ≥10mm	ID: ≥50mm OD: ≥80mm W: ≥30mm	DIA ≥150mm	Excellent	150 °C	Excellent	Static: 82 N/mm <sup>2</sup> Dynamic: 55 N/mm <sup>2</sup>	0.15 - 0.30	
W: ≥50mm L: ≥50mm THK: ≥10mm	ID: ≥50mm OD: ≥80mm W: ≥30mm	DIA ≥150mm	Good	150 °C	Excellent	Static: 82 N/mm <sup>2</sup> Dynamic: 55 N/mm <sup>2</sup>	0.10 - 0.25	
W: ≥50mm L: ≥50mm THK: ≥10mm	ID: ≥30mm OD: ≥80mm W: ≥30mm	DIA ≥150mm	Sensitive	225 °C	Good	Static: 413 N/mm <sup>2</sup> Dynamic: 206 N/mm <sup>2</sup>	0.01 - 0.07	
W: ≥50mm L: ≥50mm THK: ≥10mm	ID: ≥50mm OD: ≥80mm W: ≥30mm	DIA ≥150mm	Excellent	125 °C	Average	Static: 82 N/mm <sup>2</sup> Dynamic: 55 N/mm <sup>2</sup>	0.15 - 0.30	
W: ≥50mm L: ≥50mm THK: ≥10mm	ID: ≥50mm OD: ≥80mm W: ≥30mm	DIA ≥150mm	Excellent	425 °C	Average	Static: 82 N/mm <sup>2</sup> Dynamic: 55 N/mm <sup>2</sup>	0.10 - 0.30	
W: ≥50mm L: ≥50mm THK: ≥10mm	N/A	N/A	Sensitive	200 °C	Good	Static: 13 N/mm <sup>2</sup> Dynamic: 13 N/mm <sup>2</sup>	< 0.05	

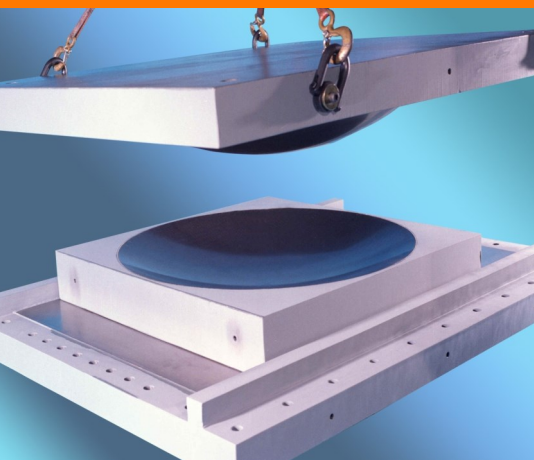
ID – Inner Diameter  
OD – Outside Diameter  
DIA – Diameter

THK – Thickness  
L – Length  
W – Width

# RBC® LUBRON™ BEARING PRODUCTS

## LUBRON™ TF

Offer exceptional performance for high load low friction applications. Constructed of woven PTFE fabric liners permanently bonded and mechanically locked to rigid bronze, stainless steel or fiberglass backings. Capable of very low friction and high wear resistance.



## LUBRON™ AQ

The proven choice for hydro and marine applications. Composed of high strength bronze alloys permanently embedded with PTFE solid lubricants, suited for underwater applications, specified by water power authorities and engineering companies worldwide.



## LUBRON™ SL

Widely used in industrial and structural applications for moderate to heavy loads and cryogenic to elevated temperatures. Solid graphite lubricants are compounded and compressed into trepanned or circular recesses. Available in a combination with bronze, copper-nickel-tin, and Meehanite® alloys.



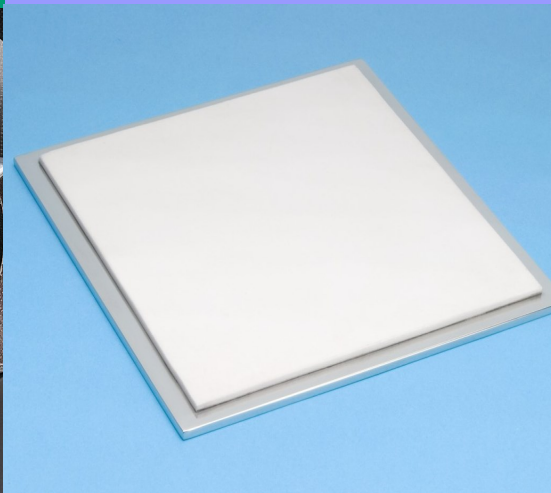
## FIBERGLIDE®

Ideal for oscillation, vibration, full rotation and linear applications. Wrapped bushings, wear plates, and thrust washers are available in both metal and non-metal backed options. Fiberglide® excels in the 2,000 to 10,000 psi load spectrum and has a low coefficient of friction.



## LUBRON™ TR

Used for low friction and moderate load applications. Consist of pure PTFE or glass-filled PTFE resin sheets bonded to either/or a combination of carbon steel, stainless steel, reinforced elastomer or neoprene substrates. Recommended for loads up to 2000 psi.



## LUBRON™ AE

Designed for use in nuclear power plants and nuclear powered vessels. Capable of withstanding high radiation and high temperatures. Lubron™ AE near-isotropic nuclear grade graphite solid lubricants are employed to provide long and reliable service life.



**Innovation. Commitment. Quality.**



**NICE<sup>®</sup>**  
Ball Bearings



**Thin Sections**  
Thin Section Bearings



**RBC Roller<sup>®</sup>**  
Cam Followers



**Heim<sup>®</sup>**  
Rod Ends & Spherical Plain Bushings



**Pitchlign<sup>®</sup>**  
HD Needle Bearings



**Aerospace Bearings**



**QuadLube<sup>®</sup>**  
Spherical Plain Bearings



**Large Bore**  
Large Bore Ball, Tapered & Cylindrical Bearings



**Fiberglide<sup>®</sup>**  
Maintenance-free Bushings



**Lubron<sup>™</sup>**  
Extreme Service Bearings



**TRTBs**  
Tapered Roller Thrust Bearings



**PIC Design<sup>®</sup>**  
Precision Gears & Belts



**Precision Products**  
Precision Pins & Shafts



**Climax<sup>™</sup>**  
Engineered Shaft Locking Solutions



**CRTBs**  
Cylindrical Roller & Thrust Bearings