

RBC Bearings® has been producing bearings in the USA since 1919. In addition to unique custom bearings, RBC Bearings® offers a full line of standard industrial and aerospace bearings, including:



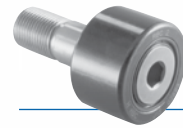
**Tapered Roller Thrust Bearings**

Case-hardened tapered roller thrust bearings for oilfield top drives and swivels. Available in full complement, maximum capacity versions.



**Thin Section Ball Bearings**

Standard cross sections to one inch. Bore sizes to 40 inches. Stainless steel and other materials are available. Seals are available on all sizes and standard cross sections. Super duplex configurations.



**Cam Followers**

Standard stud, heavy stud, yoke type, caged roller followers. Patented RBC Roller® cylindrical roller cam followers, HexLube® universal cam followers, airframe track rollers.



**Cylindrical Roller Bearings**

Cylindrical roller bearings designed for mud pump pinion and eccentric positions. Fully interchangeable to industry standards.



**Needle Roller Bearings**

Pitchline® caged heavy duty needle roller bearings ideal for cross head bearings applications. These double row bearings are available in single row and TandemRoller® versions.



**Commercial Rod Ends**

Commercial and industrial, precision, Mil-Spec series, self-lubricating, and aircraft. Sold under the Heim®, Unibal®, and Spherco® names. Available in inch and metric sizes.



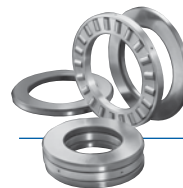
**Spherical Plain Bearings**

Radial, angular contact, extended inner ring, high misalignment. QuadLube®, ImpactTuff®, SpreadLock® Seal, CrossLube®, DuraLube™, and self-lubricating bearings. Available in inch and metric sizes.



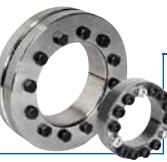
**Tapered Roller Bearings**

Single, double, & multi row versions available for main bearing positions in mud pumps, gear boxes, etc. Bearings are constructed of case hardened steel washers and rollers with bore size of 11" or greater.



**TP Series Bearings**

RBC Bearings® TP Series cylindrical roller thrust bearings ideal for crane hooks, oil well swivels, winch systems, and gear boxes. Fully interchangeable with industry standard offering.



**Keyless Locking Devices**

Mechanical bushings used to connect power transmission components onto rotating shafts. Without the use of keyways, KLDs eliminate the problems associated with backlash including fretting, corroding, and wallowing.



**Lubron™ Bearings**

Lubron™ self-lubricating bearings designed and custom manufactured in most any size, material and bearing configuration. Applications include hydro power and water control, nuclear power generation, infrastructure, architecture, offshore marine, industrial, machinery and heavy equipment.



**Shaft Collars**

Used to position or locate a component on a shaft. Made from mild steel, type 303 or 316 stainless steel, aluminum, or acetal. Available in inch and metric sizes.



**Self-Lubricating Bearings**

Radial, thrust, rod ends, spherical bearings, high temperature, high loads. Available in inch and metric sizes. Fiberglide® self-lubricating bearings.



**Specials**

RBC Bearings® manufactures many specialty bearings for the aerospace, oil and energy, semiconductor equipment, packaging, transportation, and other industries.



**Ball Bearings**

Precision ground, semigrind, unground. High loads, long life, smooth operation. Nice® branded products are offered in caged and full complement configurations.



**Rigid Couplings**

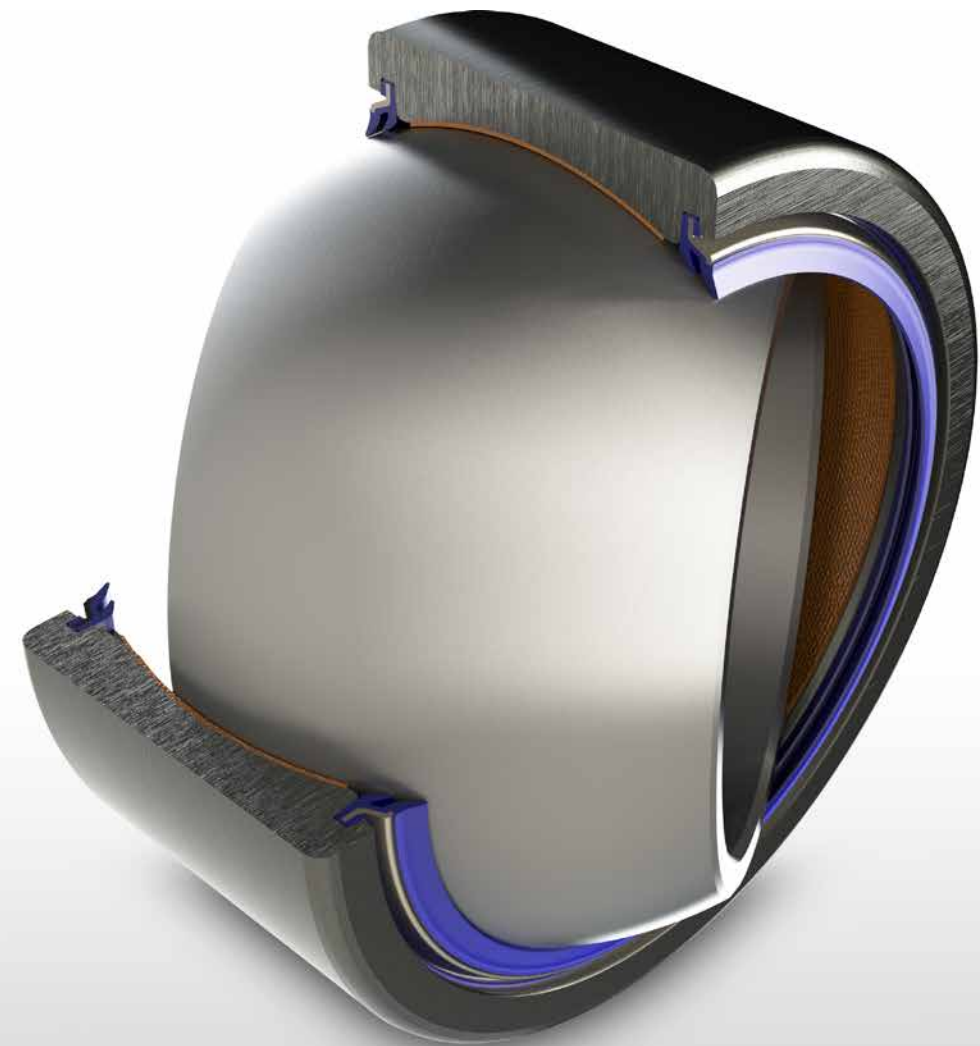
Shaft couplings serve as components to time, join, or align shafts at lower speeds and torque, especially when zero backlash is desired. Made from mild steel with a black oxide finish type 303 stainless steel, or aluminum. Available in inch and metric sizes.



**PIC Design**

Complete line of precision gears, precision hardware, timing belts, pulleys, and linear motion systems. Industries served include industrial, aerospace, defense, medical, robotics and automation, material handling, and assembly. Custom design support for unique applications.

**RBC's New DuraLube™ II Maintenance Free Spherical Plain Bearings**



# RBC's New DuraLube™ II Maintenance Free Spherical Plain Bearings

RBC's DuraLube™ II maintenance free spherical plain bearings provide reliable, grease-free operation through the use of highly-engineered PTFE liner systems that reduce friction between the surfaces of the inner and outer rings. These proprietary liner systems are developed for rigorous industrial applications, and have proven successful time and time again. Coupled with the most advanced sealing system on the market, the RBC solution provides the maximum durability you need in the most demanding applications.

## Features

- ✓ Most Advanced Liner Technologies
- ✓ High Performance Sealing System
- ✓ Higher Load Ratings vs Steel-on-Steel
- ✓ Proven in the Most Demanding Conditions

## Benefits

- ✓ No Costly Lubrication Systems
- ✓ Reduced Operating Costs
- ✓ Environmentally Friendly
- ✓ Ensures Lubricant is in the Load Zone

## Typical Applications



# RBC's New DuraLube™ II Maintenance Free Spherical Plain Bearings



## RBC TriLock™ Sealing Designs

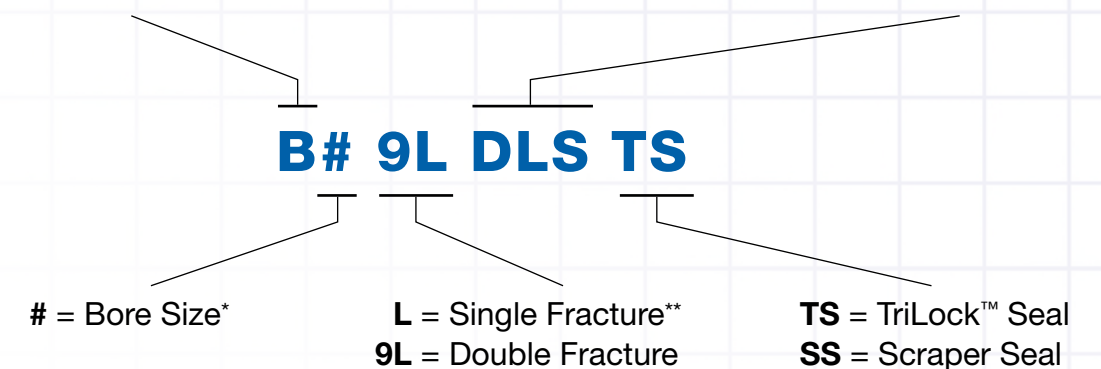
- ✓ The most robust sealing option on the market
- ✓ Triple barrier protection
- ✓ Protection vs hard contaminants as well as dust/water ingress
- ✓ Optimized design to keep PTFE material in the bearing
- ✓ Low torque design
- ✓ Ozone & UV resistant

## PTFE Liner Options

| Liner System          | Load Rating | Reverse Loading | Low Friction | Operating Velocity | Wear Resistance |
|-----------------------|-------------|-----------------|--------------|--------------------|-----------------|
| DuraLube™ II Standard | ✓           | ✓✓              | ✓✓           | ✓✓                 | ✓               |
| DuraLube™ II Plus     | ✓✓          | ✓               | ✓✓✓          | ✓✓✓                | ✓✓              |
| DuraLube™ II Ultra    | ✓✓✓         | ✓✓✓             | ✓            | ✓                  | ✓✓✓             |

## Part Numbering System

**B** = Inch Series Spherical Plain Bearing  
**GE** = Metric Series Spherical Plain Bearing  
**DLS** = DuraLube™ II Standard  
**DLP** = DuraLube™ II Plus  
**DLU** = DuraLube™ II Ultra



\* Bore size (in the metric series # in millimeters, in the inch series # is 1/16 inch)

\*\* L is dropped on single fractured metric bearings

For specific technical details or custom designed solutions, please consult with RBC Sales or Application Engineering Representative, or visit [www.rbcbearings.com/DuraLube](http://www.rbcbearings.com/DuraLube).