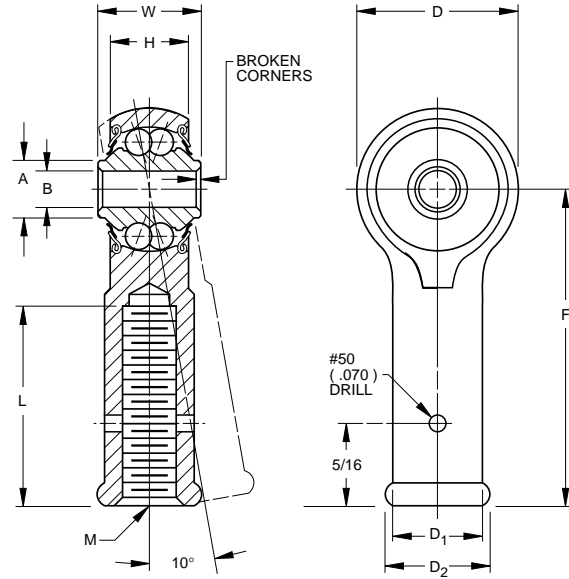


# BALL BEARING ROD ENDS — REP SERIES INTERNAL THREAD



## MS21153 • SAE-AS6039

- Precision series
- Double row, ball, self-aligning
- 10° permissible misalignment in either direction
- These bearings are manufactured with an internal play of .0004 in. (.010mm) max.
- Inner and outer raceway surface finish = 8 micro in. AA max.
- Equipped with PTFE seals
- Exposed surfaces except bore, cap, and seals are cadmium plated
- Outer shank – 90,000 psi min. tensile strength
- Pre-lubricated (refer to nomenclature page)



## SPECIFICATIONS AND ORDERING INFORMATION

**TO ORDER, SPECIFY BEARING NUMBER AND FACTORY SPECIFICATION. SEE TABLE 1 ON PG 8. (Example REPB3N FS464)**

Bearing Number	MS 21153 Dash No.	Bore B		Outside Diameter D		Widths				A		F		L <sup>(1)</sup>		D <sup>2</sup>		D <sup>1</sup>		M UNJF-3B Threads Per AS8879	Wt.		Radial Limit Load Rating	
		+0.0000, -0.0003 +0.000, -0.008	±.010 ±.25	+0.000, -.005 +0.00, -.13	±.010 ±.25	W	H	Approx.	±.010 ±.25	±.031 ±.79	in.	mm	in.	mm	in.	mm	in.	mm	Approx.		lbs.	kg	lbf.	N
REPB3N	-1	0.1900	4.826	0.781	19.84	0.437	11.10	0.328	8.33	0.281	7.14	1.375	34.92	0.750	19.05	0.438 <sup>(3)</sup>	11.13 <sup>(3)</sup>	0.375	9.52	¼-28RH	0.05	0.023	1000	4400
REP3FL4-3	-5	0.1900	4.826	0.781	19.84	0.437	11.10	0.328	8.33	0.281	7.14	1.375	34.92	0.750	19.05	0.438 <sup>(3)</sup>	11.13 <sup>(3)</sup>	0.375	9.52	¼-28LH	0.05	0.023	1000	4400
REPB3N-2	-2	0.1900	4.826	0.781	19.84	0.437	11.10	0.328	8.33	0.281	7.14	1.375	34.92	0.750	19.05	0.438 <sup>(4)</sup>	11.13 <sup>(4)</sup>	0.483	11.13	¾-24RH	0.06	0.027	1000	4400
REP3F4	-3	0.1900	4.826	0.781	19.84	0.500	12.70	0.328	8.33	0.281	7.14	1.375	34.92	0.750	19.05	0.438 <sup>(3)</sup>	11.13 <sup>(3)</sup>	0.375	9.52	¼-28RH	0.06	0.027	1000	4400
REP3FL4	-4	0.1900	4.826	0.781	19.84	0.500	12.70	0.328	8.33	0.281	7.14	1.375	34.92	0.750	19.05	0.438 <sup>(3)</sup>	11.13 <sup>(3)</sup>	0.375	9.52	¼-28LH	0.06	0.027	1000	4400
REP4F5	-6	0.2500	6.350	0.938	23.83	0.593	15.06	0.438	11.13	0.345	8.76	1.469	37.31	0.750	19.05	0.438 <sup>(3)</sup>	11.13 <sup>(4)</sup>	0.483	11.13	¾-24RH	0.07	0.032	1720	7650
REP4F5-5 <sup>(2)</sup>	-6C	0.2500	6.350	0.938	23.83	0.593	15.06	0.438	11.13	0.345	8.76	1.469	37.31	0.750	19.05	0.438 <sup>(3)</sup>	11.13 <sup>(4)</sup>	0.483	11.13	¾-24RH	0.07	0.032	1720	7650
REP4FL5 <sup>(2)</sup>	-7	0.2500	6.350	0.938	23.83	0.593	15.06	0.438	11.13	0.345	8.76	1.469	37.31	0.750	19.05	0.438 <sup>(3)</sup>	11.13 <sup>(4)</sup>	0.483	11.13	¾-24LH	0.07	0.032	1720	7650
REP4FL5-5 <sup>(2)</sup>	-7C	0.2500	6.350	0.938	23.83	0.593	15.06	0.438	11.13	0.345	8.76	1.469	37.31	0.750	19.05	0.438 <sup>(3)</sup>	11.13 <sup>(4)</sup>	0.483	11.13	¾-24LH	0.07	0.032	1720	7650
REP4F7	-8	0.2500	6.350	0.938	23.83	0.593	15.06	0.438	11.13	0.345	8.76	1.875	47.62	1.125	28.58	0.625	15.88	0.625	15.88	¾-20RH	0.08	0.036	1720	7650
REP4FL7	-9	0.2500	6.350	0.938	23.83	0.593	15.06	0.438	11.13	0.345	8.76	1.875	47.62	1.125	28.58	0.625	15.88	0.625	15.88	¾-20LH	0.08	0.036	1720	7650
REP5F5	-10	0.3125	7.938	1.250	31.75	0.870	22.10	0.656	16.66	0.501	12.73	1.875	47.62	1.000	25.40	0.483	11.13	0.483	11.13	¾-24RH	0.1	0.045	2920	12900
REP5FL5	-11	0.3125	7.938	1.250	31.75	0.870	22.10	0.656	16.66	0.501	12.73	1.875	47.62	1.000	25.40	0.483	11.13	0.483	11.13	¾-24LH	0.1	0.045	2920	12900

<sup>(1)</sup> Length includes maximum of two incomplete threads.

<sup>(2)</sup> NAS 513 locking slot in shank.

<sup>(3)</sup> Bead diameter.

<sup>(4)</sup> Hex diameter across flats.

BALL BEARING ROD ENDS