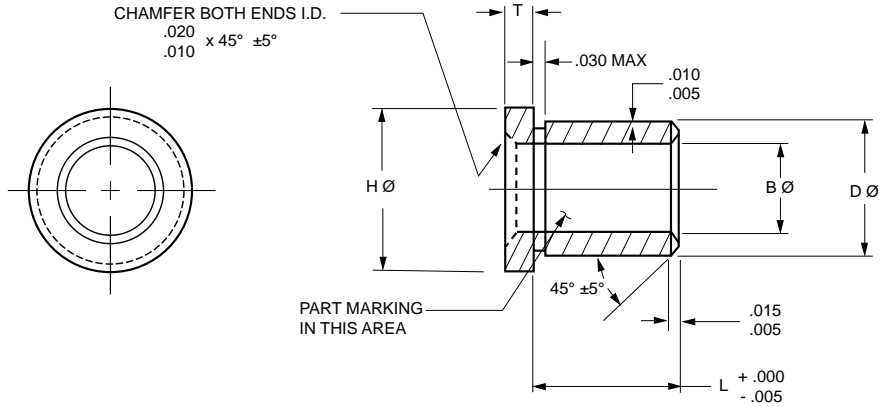


## MS14238 UNLINED FLANGED BUSHINGS

- Material options: CRES, Alloy steel, aluminum bronze, beryllium copper
- Finish options: Cadmium plating, zinc nickel plating, IVD aluminum coating
- A final size (FS) option is available. Parts are manufactured to customer's required dimensions



## SPECIFICATIONS AND ORDERING INFORMATION

### DIMENSIONS – TOLERANCES

Part Number	B		D		F		H		Weight		Interference Fit	
	+.007, -.000 +.180, -.000		+.000, -.0005 +.000, -.013		+.000, -.005 +.00, -.13		+.010, -.010 +.25, -.25		Approx. (Assume 1 in. Length)		Fit (Ref.)	
	in.	mm	in.	mm	in.	mm	in.	mm	lbs.	kg		
MS14238C03-xxx	0.1770	4.496	0.3142	7.981	0.062	1.575	0.447	11.354	0.0157	0.0071	.0004/.0017 in.	.003/.028 mm
MS14238C04-xxx	*0.2350	5.969	0.3767	9.568	0.062	1.575	0.510	12.954	0.0204	0.0093	.0004/.0017 in.	.003/.028 mm
MS14238C05-xxx	*0.2990	7.595	0.4393	11.158	0.062	1.575	0.572	14.529	0.0243	0.0110	.0005/.0018 in.	.013/.046 mm
MS14238C06-xxx	*0.3560	9.042	*0.5020	12.751	0.062	1.575	0.635	16.129	0.0293	0.0133	.0005/.0020 in.	.013/.051 mm
MS14238C07-xxx	0.4210	10.693	*0.5646	14.341	0.062	1.575	0.697	17.704	0.0330	0.0150	.0005/.0021 in.	.013/.053 mm
MS14238C08-xxx	0.4830	12.268	**0.6272	15.931	0.062	1.575	0.760	19.304	0.0373	0.0169	.0005/.0022 in.	.013/.056 mm
MS14238C10-xxx	0.6080	15.443	***0.8150	20.701	0.094	2.388	1.010	25.654	0.0716	0.0325	.0006/.0025 in.	.015/.064 mm
MS14238C10A-xxx	0.6080	15.443	***0.8150	20.701	0.062	1.575	1.010	25.654	0.0691	0.0313	.0006/.0025 in.	.015/.064 mm
MS14238C12-xxx	**0.7320	18.593	***0.9400	23.876	0.094	2.388	1.135	28.829	0.0843	0.0382	.0006/.0025 in.	.015/.064 mm
MS14238C14-xxx	**0.8570	21.768	***1.0651	27.054	0.094	2.388	1.260	32.004	0.0967	0.0438	.0006/.0026 in.	.015/.066 mm
MS14238C16-xxx	**0.9820	24.943	***1.1901	30.229	0.094	2.388	1.385	35.179	0.1090	0.0495	.0006/.0026 in.	.015/.066 mm
MS14238C18-xxx	**1.1070	28.118	***1.3151	33.404	0.125	3.175	1.510	38.354	0.1252	0.0568	.0006/.0026 in.	.015/.066 mm
MS14238C20-xxx	**1.2320	31.293	***1.4401	36.579	0.125	3.175	1.635	41.529	0.1380	0.0626	.0006/.0026 in.	.015/.066 mm
	*+.008, -.000 +.200, -.000 **+.010, -.000 +.250, -.000		*+.000, -.0007 +.000, -.018 **+.000, -.0008 +.000, -.020 ***+.000, -.0010 +.000, -.025									

Available journal material options:

C=CRES 17-4PH per AMS 5643 (shown above)

S=Steel alloy 4130 per Mil-S-6758

A=Aluminum nickel bronze per AMS 4640

B=Beryllium copper per ASTM B 196

xxx: Length in .010 increments (ex: -.025 = .025 in.)