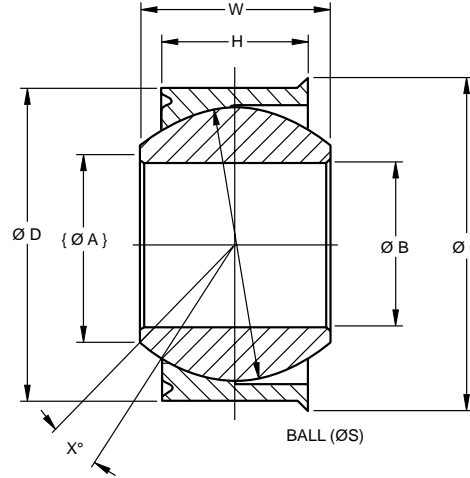


## CORROSION RESISTANT SINGLE V-GROOVE BEARINGS

- Material
  - Ball: Cobalt Alloy per AMS 5387
  - 37 HRC minimum
  - Race: 15-5PH CRES per AMS 5659
  - Cond H-1025
- Surface Treatment
  - Ball O.D.: Solid film lubricant
  - Race Spherical I.D.: Nitrided



SPHERICAL BEARINGS

## SPECIFICATIONS AND ORDERING INFORMATION

### DIMENSIONS – TOLERANCES

LHSSFGTMxx	B		D		H		W		C		A		S		X°
	+0.000, -0.005		+0.000, -0.005		+0.003, -0.003		+0.000, -0.002		+0.002, -0.002		Ø Ref.	Ø Ref.	Ref.	Ref.	Ref.
	+0.000, -0.013		+0.000, -0.013		+0.76, -0.76		+0.000, -0.051		+0.051, -0.051						
Dash No.	in.	mm	in.	mm	in.	mm	in.	mm	in.	mm	in.	mm	in.	mm	
03	0.1900	4.826	0.5625	14.288	0.218	5.54	0.281	7.14	0.565	14.35	0.293	7.44	0.4060	10.312	10
04	0.2500	6.350	0.6562	16.667	0.250	6.35	0.343	8.71	0.676	17.17	0.405	10.29	0.5300	13.462	12
05	0.3125	7.938	0.7500	19.050	0.281	7.14	0.375	9.53	0.770	19.56	0.420	10.67	0.5625	14.288	11
06	0.3750	9.525	0.8125	20.638	0.312	7.92	0.406	10.31	0.852	21.64	0.476	12.09	0.6250	15.875	10
07	0.4375	11.113	0.9062	23.017	0.343	8.71	0.437	11.10	0.946	24.03	0.530	13.46	0.6865	17.437	9
08	0.5000	12.700	1.0000	25.400	0.390	9.91	0.500	12.70	1.080	27.43	0.641	16.28	0.8125	20.638	9
09	0.5625	14.288	1.0937	27.780	0.437	11.10	0.562	14.27	1.174	29.82	0.671	17.04	0.8750	22.225	9
10	0.6250	15.875	1.1875	30.163	0.500	12.70	0.625	15.88	1.267	32.18	0.740	18.80	0.9680	24.587	9
12	0.7500	19.050	1.4375	36.513	0.593	15.06	0.750	19.05	1.517	38.53	0.921	23.39	1.1870	30.150	9
14	0.8750	22.225	1.5625	39.688	0.703	17.86	0.875	22.23	1.642	41.71	0.978	24.84	1.3120	33.325	9
16	1.0000	25.400	1.7500	44.450	0.797	20.24	1.000	25.40	1.830	46.48	1.119	28.42	1.5000	38.100	9

.002 inch max internal clearance (contact RBC engineering for reduced clearance design)

### LOAD RATINGS

LHSSFGTMxx	Static Radial Load Limit		Weight Approx.	
	lb.	N	lbs.	kg
DASH NO.				
03			0.02	0.009
04			0.02	0.009
05			0.04	0.018
06			0.04	0.018
07			0.06	0.027
08			0.07	0.032
09			0.09	0.041
10			0.11	0.050
12			0.17	0.077
14			0.22	0.100
16			0.28	0.127

Please contact the RBC Engineering Support Team for specific load information or to customize a product for your particular needs.