

Industrial Rod Ends

Precision Engineered Solutions

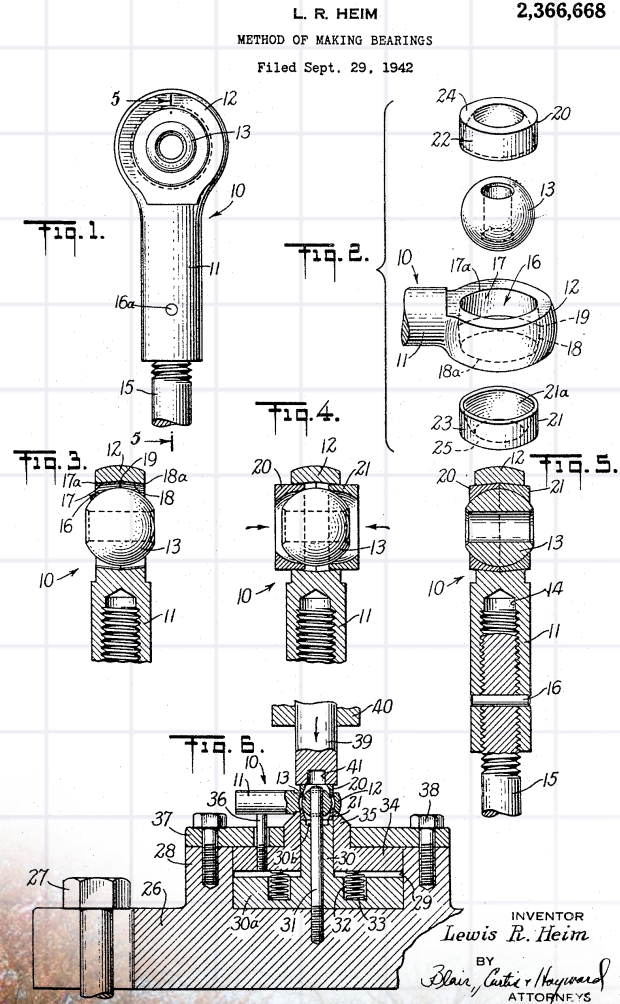


Heim[®] Bearings, The First Name in Rod Ends[™]

History of the Heim Joint

Heim was founded by Lewis Heim in 1935. It was acquired by RBC in 1993 where the genuine Heim joint continues to be manufactured by RBC Heim Bearings.

In 1942, Lewis Heim was given the only patent in North America for integral rod end bearings to support World War II. From that, he launched an entire product line, of which those products are still used in the market today.



Heim® Bearings Headquarters
Fairfield, CT

© 2022 RBC Bearings Incorporated. All rights reserved.



www.rbcbearings.com

800.356.6584





Maintenance Free

NEW! MHJ Series™

Features and Benefits

- ✓ Injected polymer race eliminates the need for re-lubrication
- ✓ Low coefficient of friction ensures smooth operation
- ✓ Load slot geometry increases strength and capacity
- ✓ Proprietary coating provides superior corrosion protection
- ✓ Self-sealing assembly prevents contamination from intruding
- ✓ Low moisture absorption maintains internal clearance integrity
- ✓ Resistant to various chemical fluids for consistent performance



7x
STANDARD CORROSION PROTECTION



Maintenance Free

MxCRT Series™

Features and Benefits

- ✓ Low carbon steel body offers strength for common industrial applications/mechanisms
- ✓ Corrosion resistant coating to protect from environmental conditions
- ✓ Maintenance free lined race for low friction and longer dynamic life
- ✓ 2 piece configuration gives increased axial retention with good precision



© 2022 RBC Bearings Incorporated. All rights reserved.

2 Piece

MxCR Series™

Features and Benefits

- ✓ Low carbon steel
- ✓ Corrosion resistant coating
- ✓ Optional grease for added life
- ✓ Offers increased axial retention with good precision

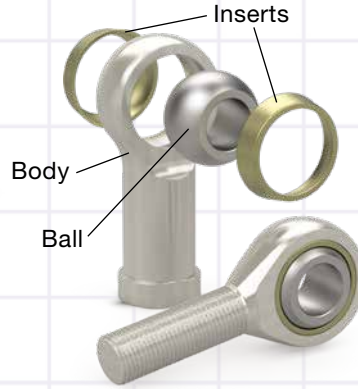


4 Piece

HM/HMX Series™

Features and Benefits

- ✓ Low Carbon and Alloy Steel Offerings
- ✓ Corrosion resistant coating
- ✓ Copper alloy inserts
- ✓ Optional grease for long life

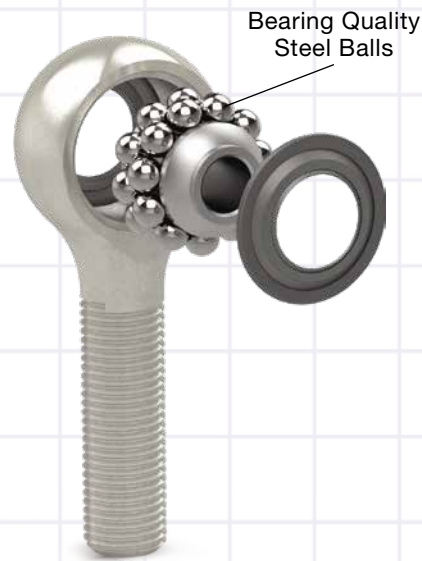


Ball Bearing Rod Ends

REP Series™

Features and Benefits

- ✓ Carbon steel and corrosion resistant steel offerings
- ✓ Ultra smooth & quiet
- ✓ Allows for misalignment
- ✓ Minimal backlash
- ✓ Greased and sealed preventing contamination for the life of the bearing
- ✓ Corrosion resistant coating



Maintenance Free

CMHD/MHD Series™

Features and Benefits

- ✓ Low carbon steel
- ✓ Corrosion resistant coating
- ✓ Engineered thermoplastic race
 - Smooth and quiet operation
 - Vibration dampening
 - Low moisture absorption
 - Chemical resistance
 - Dimensionally stable



Maintenance Free

HME/MT Series™

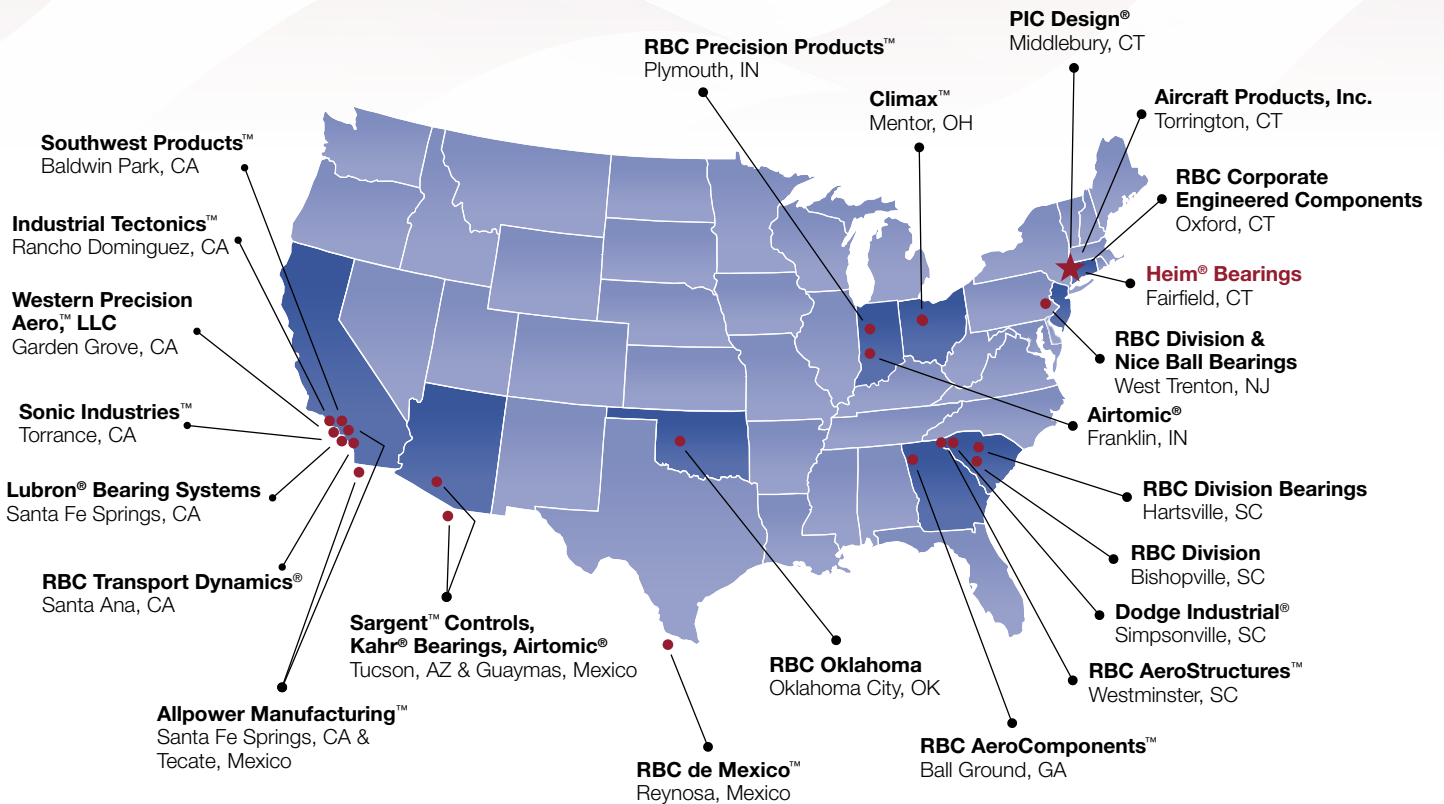
Features and Benefits

- ✓ PTFE liner
 - High dynamic load capability
 - Superior wear resistance
 - High temperature applications
- ✓ Corrosion resistant coating



© 2022 RBC Bearings Incorporated. All rights reserved.

RBC[®] BEARINGS



RBC Bearings® has been producing bearings in the USA since 1919. In addition to unique custom bearings, RBC Bearings® offers a full line of standard industrial and aerospace bearings, including:



Tapered Roller Thrust Bearings

Case-hardened tapered roller thrust bearings for oilfield top drives and swivels. Available in full complement, maximum capacity versions.



Thin Section Ball Bearings

Standard cross sections to one inch. Bore sizes to 40 inches. Stainless steel and other materials are available. Seals are available on all sizes and standard cross sections. Super duplex configurations.



Cam Followers

Standard stud, heavy stud, yoke type, caged roller followers. Patented RBC Roller® cylindrical roller cam followers, HexLube® universal cam followers, airframe track rollers.



Cylindrical Roller Bearings

Cylindrical roller bearings designed for mud pump pinion and eccentric positions. Fully interchangeable to industry standards.



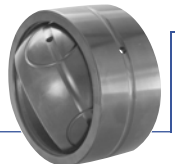
Needle Roller Bearings

Pitchhign® caged heavy duty needle roller bearings ideal for cross head bearings applications. These double row bearings are available in single row and TandemRoller® versions.



Commercial Rod Ends

Commercial and industrial, precision, Mil-Spec series, self-lubricating, and aircraft. Sold under the Heim®, Unibal®, and Spherco® names. Available in inch and metric sizes.



Spherical Plain Bearings

Radial, angular contact, extended inner ring, high misalignment. QuadLube®, ImpactTuff®, SpreadLock® Seal, CrossLube®, DuraLube™, and self-lubricating bearings. Available in inch and metric sizes.



Tapered Roller Bearings

Single, double, & multi row versions available for main bearing positions in mud pumps, gear boxes, etc. Bearings are constructed of case hardened steel washers and rollers with bore size of 11" or greater.



TP Series Bearings

RBC Bearings® TP Series cylindrical roller thrust bearings ideal for crane hooks, oil well swivels, winch systems, and gear boxes. Fully interchangeable with industry standard offering.



Keyless Locking Devices

Mechanical bushings used to connect power transmission components onto rotating shafts. Without the use of keyways, KLDs eliminate the problems associated with backlash including fretting, corroding, and wallowing.



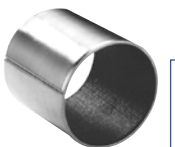
Lubron® Bearings

Lubron® self-lubricating bearings designed and custom manufactured in most any size, material and bearing configuration. Applications include hydro power and water control, nuclear power generation, infrastructure, architecture, offshore marine, industrial, machinery and heavy equipment.



Shaft Collars

Used to position or locate a component on a shaft. Made from mild steel, type 303 or 316 stainless steel, aluminum, or acetal. Available in inch and metric sizes.



Self-Lubricating Bearings

Radial, thrust, rod ends, spherical bearings, high temperature, high loads. Available in inch and metric sizes. Fiberglide® self-lubricating bearings.



Rigid Couplings

Shaft couplings serve as components to time, join, or align shafts at lower speeds and torque, especially when zero backlash is desired. Made from mild steel with a black oxide finish type 303 stainless steel, or aluminum. Available in inch and metric sizes.



Specials

RBC Bearings® manufactures many specialty bearings for the aerospace, oil and energy, semiconductor equipment, packaging, transportation, and other industries.



Ball Bearings

Precision ground, semiground, unground. High loads, long life, smooth operation. Nice® branded products are offered in caged and full complement configurations.



PIC Design®

Complete line of precision gears, precision hardware, timing belts, pulleys, and linear motion systems. Industries served include industrial, aerospace, defense, medical, robotics and automation, material handling, and assembly. Custom design support for unique applications.